



ELECTRONIC COPY

782645448
Report verification at igi.org

DIAMOND REPORT

March 16, 2026
IGI Report Number **782645448**
Description **NATURAL DIAMOND**
Shape and Cutting Style **ROUND BRILLIANT**
Measurements **10.87 - 10.95 X 6.83 MM**

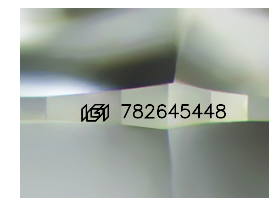
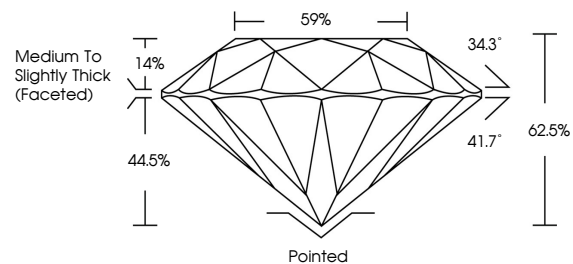
GRADING RESULTS

Carat Weight **5.01 CARATS**
Color Grade **I**
Clarity Grade **VVS 2**
Cut Grade **EXCELLENT**

ADDITIONAL GRADING INFORMATION

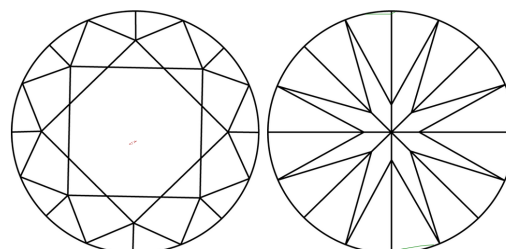
Polish **EXCELLENT**
Symmetry **EXCELLENT**
Fluorescence **NONE**
Inscription(s) **782645448**

PROPORTIONS



Sample Image Used

CLARITY CHARACTERISTICS



KEY TO SYMBOLS

Red symbols indicate internal characteristics.
Green symbols indicate external characteristics.

COLOR

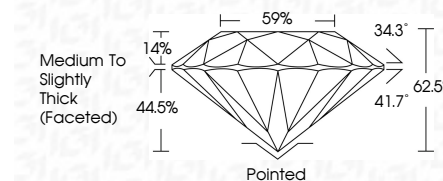
D - F	G - J	K - M	N - R	S - Z	FANCY
Colorless	Near Colorless	Slightly Tinted	Very Light Color	Light Color	

CLARITY

FL	IF	VVS 1-2	VS 1-2	SI 1-2	I 1-3
Flawless	Internally Flawless	Very Very Slightly Included	Very Slightly Included	Slightly Included	Included



March 16, 2026
IGI Report Number **782645448**
Description **NATURAL DIAMOND**
Shape and Cutting Style **ROUND BRILLIANT**
Measurements **10.87 - 10.95 X 6.83 MM**
GRADING RESULTS
Carat Weight **5.01 CARATS**
Color Grade **I**
Clarity Grade **VVS 2**
Cut Grade **EXCELLENT**



ADDITIONAL GRADING INFORMATION

Polish **EXCELLENT**
Symmetry **EXCELLENT**
Fluorescence **NONE**
Inscription(s) **782645448**



IGI



March 16, 2026
IGI Report No 782645448
ROUND BRILLIANT

10.87 - 10.95 X 6.83 MM

5.01 CARATS
I
VVS 2
EXCELLENT
62.5%
59%
Medium To Slightly Thick (Faceted)

Pointed
EXCELLENT
EXCELLENT
NONE
NONE
782645448

Culet
Polish
Symmetry
Fluorescence
Inscriptions(s)