



ELECTRONIC COPY

780669170
Report verification at igi.org



May 15, 2026
IGI Report Number **780669170**
Description **NATURAL DIAMOND**
Shape and Cutting Style **PRINCESS CUT**
Measurements **5.24 X 5.22 X 4.01 MM**
GRADING RESULTS
Carat Weight **1.02 CARAT**
Color Grade **I**
Clarity Grade **VS 2**
Cut Grade **VERY GOOD**

DIAMOND REPORT

May 15, 2026
IGI Report Number **780669170**
Description **NATURAL DIAMOND**
Shape and Cutting Style **PRINCESS CUT**
Measurements **5.24 X 5.22 X 4.01 MM**

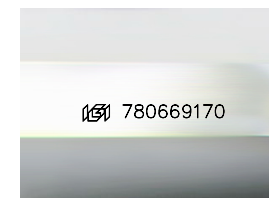
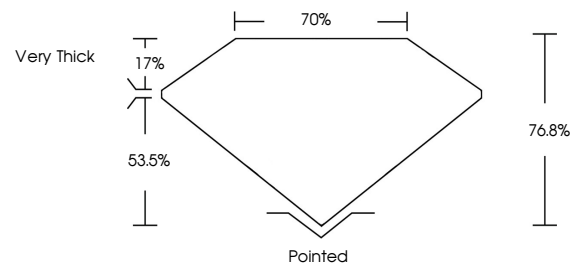
GRADING RESULTS

Carat Weight **1.02 CARAT**
Color Grade **I**
Clarity Grade **VS 2**
Cut Grade **VERY GOOD**

ADDITIONAL GRADING INFORMATION

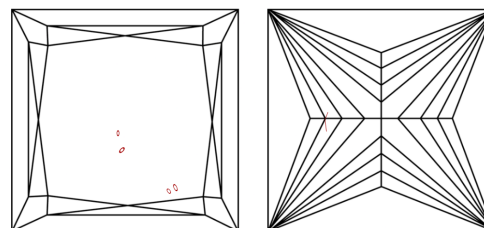
Polish **EXCELLENT**
Symmetry **EXCELLENT**
Fluorescence **NONE**
Inscription(s) **780669170**

PROPORTIONS



Sample Image Used

CLARITY CHARACTERISTICS



KEY TO SYMBOLS

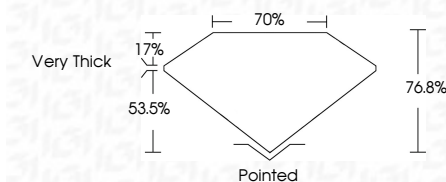
Red symbols indicate internal characteristics.
Green symbols indicate external characteristics.

COLOR

D - F	G - J	K - M	N - R	S - Z	FANCY
Colorless	Near Colorless	Slightly Tinted	Very Light Color	Light Color	

CLARITY

FL	IF	VVS ¹⁻²	VS ¹⁻²	SI ¹⁻²	I ¹⁻³
Flawless	Internally Flawless	Very Very Slightly Included	Very Slightly Included	Slightly Included	Included



ADDITIONAL GRADING INFORMATION

Polish **EXCELLENT**
Symmetry **EXCELLENT**
Fluorescence **NONE**
Inscription(s) **780669170**



IGI



May 15, 2026
IGI Report No **780669170**
PRINCESS CUT
1.02 CARAT
Color Grade **I**
Clarity Grade **VS 2**
Depth **76.8%**
Table **70%**
Girdle **Very Thick**
Culet **Pointed**
Polish **EXCELLENT**
Symmetry **EXCELLENT**
Fluorescence **NONE**
Inscriptions(s) **780669170**