



ELECTRONIC COPY

780669165
Report verification at igi.org

DIAMOND REPORT

May 18, 2026
IGI Report Number **780669165**
Description **NATURAL DIAMOND**
Shape and Cutting Style **EMERALD CUT**
Measurements **6.41 X 4.65 X 3.30 MM**

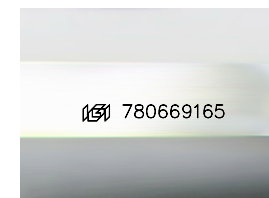
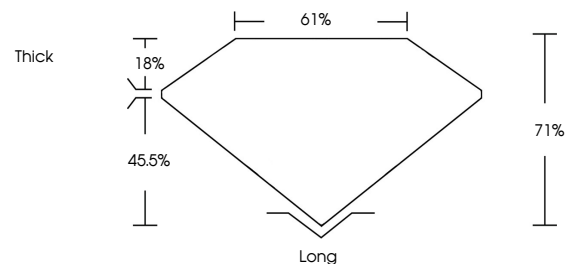
GRADING RESULTS

Carat Weight **1.02 CARAT**
Color Grade **H**
Clarity Grade **VVS 1**
Cut Grade **VERY GOOD**

ADDITIONAL GRADING INFORMATION

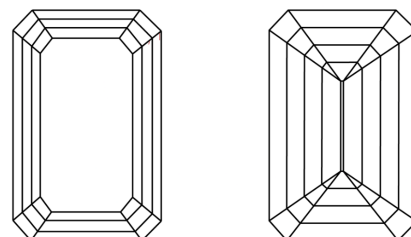
Polish **EXCELLENT**
Symmetry **EXCELLENT**
Fluorescence **NONE**
Inscription(s) **780669165**

PROPORTIONS



Sample Image Used

CLARITY CHARACTERISTICS



KEY TO SYMBOLS

Red symbols indicate internal characteristics.
Green symbols indicate external characteristics.

COLOR

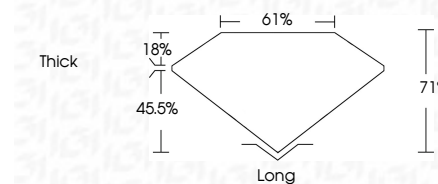
D - F	G - J	K - M	N - R	S - Z	FANCY
Colorless	Near Colorless	Slightly Tinted	Very Light Color	Light Color	

CLARITY

FL	IF	VVS ¹⁻²	VS ¹⁻²	SI ¹⁻²	I ¹⁻³
Flawless	Internally Flawless	Very Very Slightly Included	Very Slightly Included	Slightly Included	Included



May 18, 2026
IGI Report Number **780669165**
Description **NATURAL DIAMOND**
Shape and Cutting Style **EMERALD CUT**
Measurements **6.41 X 4.65 X 3.30 MM**
GRADING RESULTS
Carat Weight **1.02 CARAT**
Color Grade **H**
Clarity Grade **VVS 1**
Cut Grade **VERY GOOD**



ADDITIONAL GRADING INFORMATION

Polish **EXCELLENT**
Symmetry **EXCELLENT**
Fluorescence **NONE**
Inscription(s) **780669165**



IGI



May 18, 2026
IGI Report No 780669165
EMERALD CUT
6.41 X 4.65 X 3.30 MM
1.02 CARAT
H
VVS 1
VERY GOOD
71%
61%
Thick
Long
EXCELLENT
EXCELLENT
NONE
NONE
 780669165