



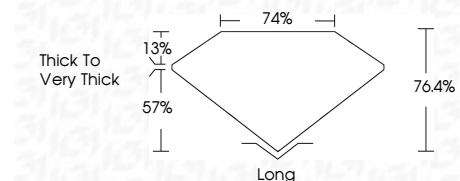
**ELECTRONIC COPY**

780669063  
Report verification at [igi.org](http://igi.org)



May 5, 2026  
IGI Report Number **780669063**  
Description **NATURAL DIAMOND**  
Shape and Cutting Style **EMERALD CUT**  
Measurements **7.18 X 5.13 X 3.92 MM**

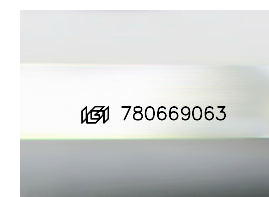
**GRADING RESULTS**  
Carat Weight **1.48 CARAT**  
Color Grade **I**  
Clarity Grade **VS 2**  
Cut Grade **VERY GOOD**



**ADDITIONAL GRADING INFORMATION**  
Polish **EXCELLENT**  
Symmetry **EXCELLENT**  
Fluorescence **NONE**  
Inscription(s) **IGI 780669063**

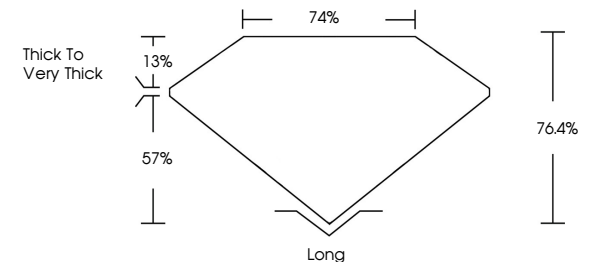


May 5, 2026	IGI Report No 780669063	1.48 CARAT	I	VS 2	76.4%	74%	Thick To Very Thick	Long	EXCELLENT	EXCELLENT	NONE	IGI 780669063
EMERALD CUT	7.18 X 5.13 X 3.92 MM	Color Grade	Cut Grade	Depth	Table	Girdle		Color	Polish	Symmetry	Fluorescence	Inscription(s)

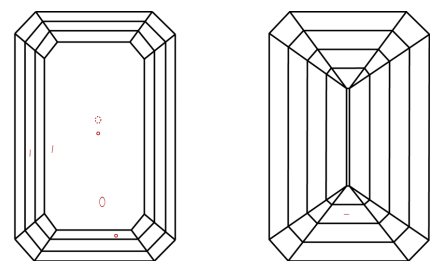


Sample Image Used

**PROPORTIONS**



**CLARITY CHARACTERISTICS**



**KEY TO SYMBOLS**  
Red symbols indicate internal characteristics.  
Green symbols indicate external characteristics.

**COLOR**

D - F	G - J	K - M	N - R	S - Z	FANCY
Colorless	Near Colorless	Slightly Tinted	Very Light Color	Light Color	

**CLARITY**

FL	IF	VVS 1-2	VS 1-2	SI 1-2	I 1-3
Flawless	Internally Flawless	Very Very Slightly Included	Very Slightly Included	Slightly Included	Included

