



ELECTRONIC COPY

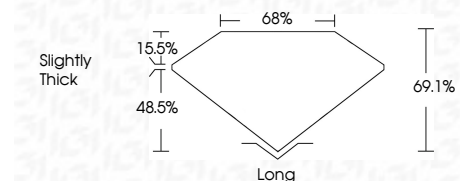
780668890
Report verification at igi.org



April 2, 2026
IGI Report Number **780668890**
Description **NATURAL DIAMOND**
Shape and Cutting Style **EMERALD CUT**
Measurements **7.08 X 5.05 X 3.49 MM**

GRADING RESULTS

Carat Weight **1.31 CARAT**
Color Grade **I**
Clarity Grade **VS 2**
Cut Grade **VERY GOOD**



ADDITIONAL GRADING INFORMATION

Polish **EXCELLENT**
Symmetry **EXCELLENT**
Fluorescence **NONE**
Inscription(s) **IGI 780668890**

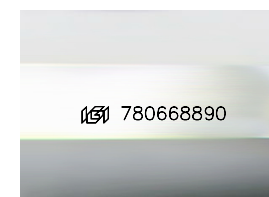
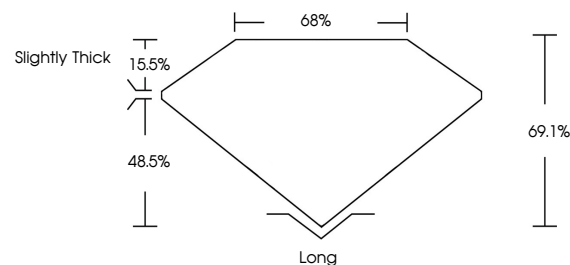


IGI



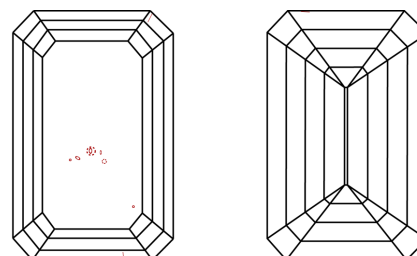
April 2, 2026	IGI Report No 780668890	EMERALD CUT	1.31 CARAT	I	VS 2	7.08 X 5.05 X 3.49 MM	68%	48.5%	Slightly Thick	Long	EXCELLENT	EXCELLENT	NONE	IGI 780668890		
IGI Report No	780668890	EMERALD CUT	1.31 CARAT	I	VS 2	7.08 X 5.05 X 3.49 MM	68%	48.5%	Slightly Thick	Long	EXCELLENT	EXCELLENT	NONE	IGI 780668890		
Carat Weight	1.31 CARAT	Color Grade	I	Clarity Grade	VS 2	Measurements	7.08 X 5.05 X 3.49 MM	Table	15.5%	Depth	48.5%	Cut Grade	VERY GOOD	Inscription(s)	IGI 780668890	
Color Grade	I	Clarity Grade	VS 2	Depth	48.5%	Table	15.5%	Grade	Slightly Thick	Long	EXCELLENT	Symmetry	EXCELLENT	Fluorescence	NONE	
Clarity Grade	VS 2	Cut Grade	VERY GOOD	Table	15.5%	Grade	Slightly Thick	Cutler	Polish	EXCELLENT	Symmetry	EXCELLENT	Fluorescence	NONE	Inscription(s)	IGI 780668890

PROPORTIONS



Sample Image Used

CLARITY CHARACTERISTICS



KEY TO SYMBOLS

Red symbols indicate internal characteristics.
Green symbols indicate external characteristics.

COLOR

D - F	G - J	K - M	N - R	S - Z	FANCY
Colorless	Near Colorless	Slightly Tinted	Very Light Color	Light Color	

CLARITY

FL	IF	VVS 1-2	VS 1-2	SI 1-2	I 1-3
Flawless	Internally Flawless	Very Very Slightly Included	Very Slightly Included	Slightly Included	Included

Carat Weight	1.31 CARAT	Color Grade	I	Clarity Grade	VS 2	Measurements	7.08 X 5.05 X 3.49 MM	Table	15.5%	Depth	48.5%	Cut Grade	VERY GOOD	Inscription(s)	IGI 780668890	
Color Grade	I	Clarity Grade	VS 2	Depth	48.5%	Table	15.5%	Grade	Slightly Thick	Long	EXCELLENT	Symmetry	EXCELLENT	Fluorescence	NONE	
Clarity Grade	VS 2	Cut Grade	VERY GOOD	Table	15.5%	Grade	Slightly Thick	Cutler	Polish	EXCELLENT	Symmetry	EXCELLENT	Fluorescence	NONE	Inscription(s)	IGI 780668890