



**ELECTRONIC COPY**

780668827  
Report verification at [igi.org](http://igi.org)

**DIAMOND REPORT**

March 25, 2026  
IGI Report Number **780668827**  
Description **NATURAL DIAMOND**  
Shape and Cutting Style **SQUARE EMERALD CUT**  
Measurements **5.35 X 5.34 X 3.74 MM**

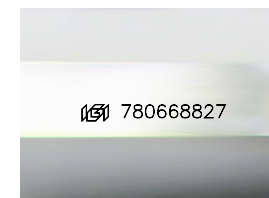
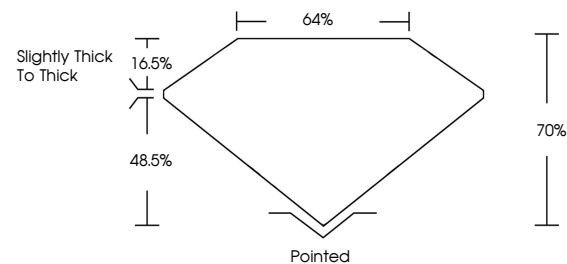
**GRADING RESULTS**

Carat Weight **1.01 CARAT**  
Color Grade **J**  
Clarity Grade **VVS 2**  
Cut Grade **VERY GOOD**

**ADDITIONAL GRADING INFORMATION**

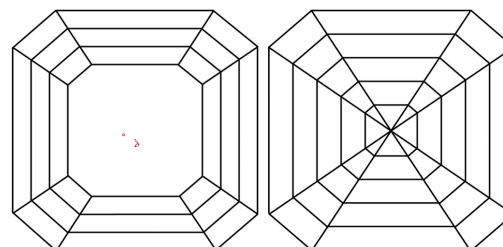
Polish **EXCELLENT**  
Symmetry **EXCELLENT**  
Fluorescence **NONE**  
Inscription(s) **780668827**

**PROPORTIONS**



Sample Image Used

**CLARITY CHARACTERISTICS**



**KEY TO SYMBOLS**

Red symbols indicate internal characteristics.  
Green symbols indicate external characteristics.

**COLOR**

D - F	G - J	K - M	N - R	S - Z	FANCY
Colorless	Near Colorless	Slightly Tinted	Very Light Color	Light Color	

**CLARITY**

FL	IF	VVS <sup>1-2</sup>	VS <sup>1-2</sup>	SI <sup>1-2</sup>	I <sup>1-3</sup>
Flawless	Internally Flawless	Very Very Slightly Included	Very Slightly Included	Slightly Included	Included



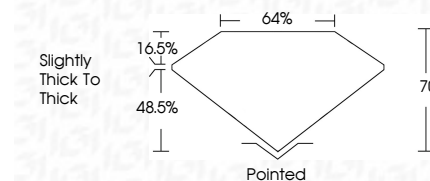
March 25, 2026  
IGI Report Number **780668827**  
Description **NATURAL DIAMOND**  
Shape and Cutting Style **SQUARE EMERALD CUT**  
Measurements **5.35 X 5.34 X 3.74 MM**

**GRADING RESULTS**

Carat Weight **1.01 CARAT**  
Color Grade **J**  
Clarity Grade **VVS 2**  
Cut Grade **VERY GOOD**

**ADDITIONAL GRADING INFORMATION**

Polish **EXCELLENT**  
Symmetry **EXCELLENT**  
Fluorescence **NONE**  
Inscription(s) **780668827**



**IGI**

March 25, 2026  
IGI Report No 780668827  
**SQUARE EMERALD CUT**  
5.35 X 5.34 X 3.74 MM  
1.01 CARAT  
J  
VVS 2  
VERY GOOD  
70%  
64%  
Slightly thick to thick  
Pointed  
EXCELLENT  
EXCELLENT  
NONE  
780668827