



ELECTRONIC COPY

780668713
Report verification at igi.org

DIAMOND REPORT

March 12, 2026
IGI Report Number **780668713**
Description **NATURAL DIAMOND**
Shape and Cutting Style **EMERALD CUT**
Measurements **6.54 X 4.67 X 3.26 MM**

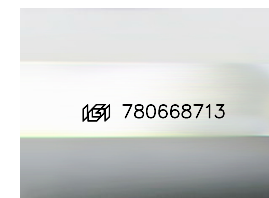
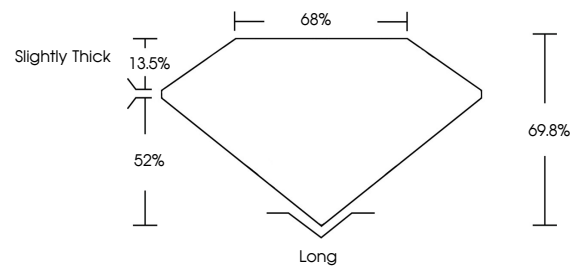
GRADING RESULTS

Carat Weight **1.00 CARAT**
Color Grade **J**
Clarity Grade **VS 2**
Cut Grade **VERY GOOD**

ADDITIONAL GRADING INFORMATION

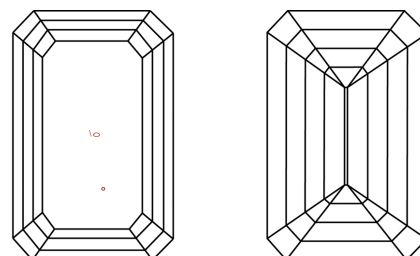
Polish **EXCELLENT**
Symmetry **EXCELLENT**
Fluorescence **VERY SLIGHT**
Inscription(s) **780668713**

PROPORTIONS



Sample Image Used

CLARITY CHARACTERISTICS



KEY TO SYMBOLS

Red symbols indicate internal characteristics.
Green symbols indicate external characteristics.

COLOR

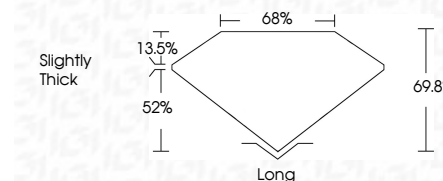
D - F	G - J	K - M	N - R	S - Z	FANCY
Colorless	Near Colorless	Slightly Tinted	Very Light Color	Light Color	

CLARITY

FL	IF	VVS 1-2	VS 1-2	SI 1-2	I 1-3
Flawless	Internally Flawless	Very Very Slightly Included	Very Slightly Included	Slightly Included	Included



March 12, 2026
IGI Report Number **780668713**
Description **NATURAL DIAMOND**
Shape and Cutting Style **EMERALD CUT**
Measurements **6.54 X 4.67 X 3.26 MM**
GRADING RESULTS
Carat Weight **1.00 CARAT**
Color Grade **J**
Clarity Grade **VS 2**
Cut Grade **VERY GOOD**



ADDITIONAL GRADING INFORMATION

Polish **EXCELLENT**
Symmetry **EXCELLENT**
Fluorescence **VERY SLIGHT**
Inscription(s) **780668713**



IGI



March 12, 2026
IGI Report No 780668713
EMERALD CUT
6.54 X 4.67 X 3.26 MM
1.00 CARAT
J
Color Grade
VS 2
VERY GOOD
Depth 69.8%
Table 68%
Girdle Slightly Thick
Long
EXCELLENT
Symmetry EXCELLENT
Fluorescence VERY SLIGHT
Inscriptions(s) 780668713