



**ELECTRONIC COPY**

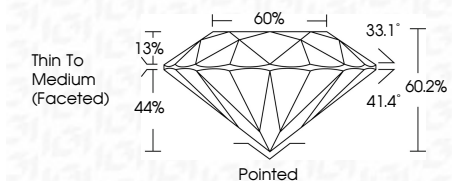
780668706  
Report verification at [igi.org](http://igi.org)



March 13, 2026  
IGI Report Number **780668706**  
Description **NATURAL DIAMOND**  
Shape and Cutting Style **ROUND BRILLIANT**  
Measurements **6.49 - 6.53 X 3.92 MM**

**GRADING RESULTS**

Carat Weight **1.01 CARAT**  
Color Grade **K**  
Clarity Grade **VS 1**  
Cut Grade **EXCELLENT**



**ADDITIONAL GRADING INFORMATION**

Polish **EXCELLENT**  
Symmetry **EXCELLENT**  
Fluorescence **SLIGHT**  
Inscription(s) **IGI 780668706**  
Comments: IDEAL CUT ROUND BRILLIANT



March 13, 2026  
IGI Report No 780668706  
**ROUND BRILLIANT**  
6.49 - 6.53 X 3.92 MM  
1.01 CARAT  
K  
VS 1  
EXCELLENT  
60.2%  
60%  
Thin To Medium (Faceted)  
Pointed  
EXCELLENT  
EXCELLENT  
SLIGHT  
IGI 780668706  
Comments: IDEAL CUT ROUND BRILLIANT

**DIAMOND REPORT**

March 13, 2026  
IGI Report Number **780668706**  
Description **NATURAL DIAMOND**  
Shape and Cutting Style **ROUND BRILLIANT**  
Measurements **6.49 - 6.53 X 3.92 MM**

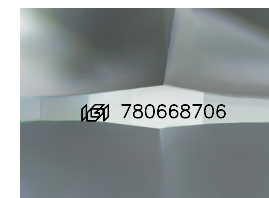
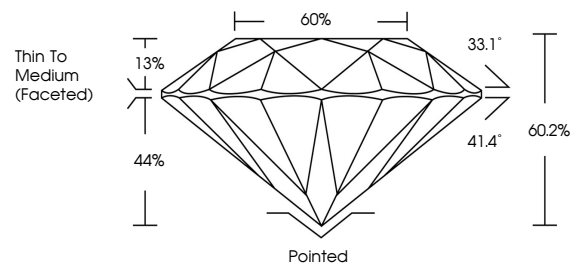
**GRADING RESULTS**

Carat Weight **1.01 CARAT**  
Color Grade **K**  
Clarity Grade **VS 1**  
Cut Grade **EXCELLENT**

**ADDITIONAL GRADING INFORMATION**

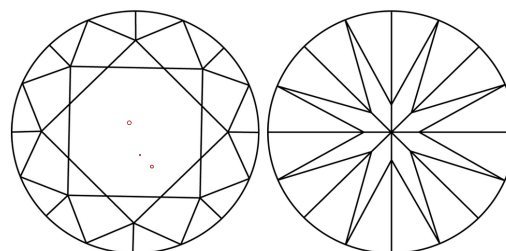
Polish **EXCELLENT**  
Symmetry **EXCELLENT**  
Fluorescence **SLIGHT**  
Inscription(s) **IGI 780668706**  
Comments: IDEAL CUT ROUND BRILLIANT

**PROPORTIONS**



Sample Image Used

**CLARITY CHARACTERISTICS**



**KEY TO SYMBOLS**

Red symbols indicate internal characteristics.  
Green symbols indicate external characteristics.

**COLOR**

D - F	G - J	K - M	N - R	S - Z	FANCY
Colorless	Near Colorless	Slightly Tinted	Very Light Color	Light Color	

**CLARITY**

FL	IF	VVS 1-2	VS 1-2	SI 1-2	I 1-3
Flawless	Internally Flawless	Very Very Slightly Included	Very Slightly Included	Slightly Included	Included

