



ELECTRONIC COPY

779662320
Report verification at igi.org

DIAMOND REPORT

March 14, 2026
IGI Report Number **779662320**
Description **NATURAL DIAMOND**
Shape and Cutting Style **CUT CORNERED RECTANGULAR MODIFIED BRILLIANT**
Measurements **9.22 X 5.92 X 4.15 MM**

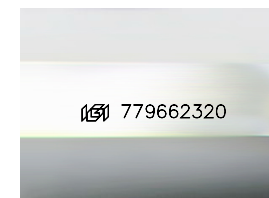
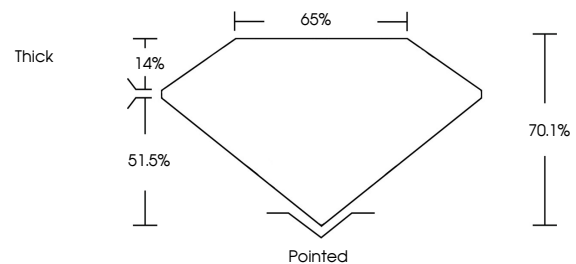
GRADING RESULTS

Carat Weight **2.01 CARATS**
Color Grade **J**
Clarity Grade **SI 1**
Cut Grade **VERY GOOD**

ADDITIONAL GRADING INFORMATION

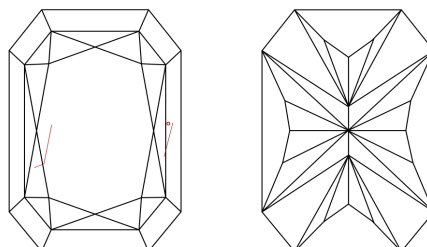
Polish **EXCELLENT**
Symmetry **EXCELLENT**
Fluorescence **SLIGHT**
Inscription(s) **779662320**

PROPORTIONS



Sample Image Used

CLARITY CHARACTERISTICS



KEY TO SYMBOLS

Red symbols indicate internal characteristics.
Green symbols indicate external characteristics.

COLOR

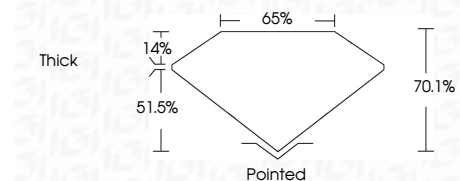
D - F	G - J	K - M	N - R	S - Z	FANCY
Colorless	Near Colorless	Slightly Tinted	Very Light Color	Light Color	

CLARITY

FL	IF	VVS ¹⁻²	VS ¹⁻²	SI ¹⁻²	I ¹⁻³
Flawless	Internally Flawless	Very Very Slightly Included	Very Slightly Included	Slightly Included	Included



March 14, 2026
IGI Report Number **779662320**
Description **NATURAL DIAMOND**
Shape and Cutting Style **CUT CORNERED RECTANGULAR MODIFIED BRILLIANT**
Measurements **9.22 X 5.92 X 4.15 MM**
GRADING RESULTS
Carat Weight **2.01 CARATS**
Color Grade **J**
Clarity Grade **SI 1**
Cut Grade **VERY GOOD**



ADDITIONAL GRADING INFORMATION

Polish **EXCELLENT**
Symmetry **EXCELLENT**
Fluorescence **SLIGHT**
Inscription(s) **779662320**



IGI



March 14, 2026
IGI Report No 779662320
CUT CORNERED RECT. MODIFIED BRILLIANT
9.22 X 5.92 X 4.15 MM
2.01 CARATS
J
SI 1
VERY GOOD
70.1%
65%
Thick
Pointed
EXCELLENT
EXCELLENT
SLIGHT
SLIGHT
 779662320