

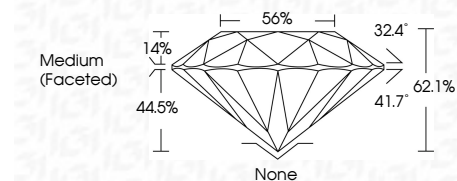


779650651  
Report verification at [igi.org](http://igi.org)



March 25, 2026  
IGI Report Number **779650651**  
Description **NATURAL DIAMOND**  
Shape and Cutting Style **ROUND BRILLIANT**  
Measurements **6.45 - 6.48 X 4.02 MM**

**GRADING RESULTS**  
Carat Weight **1.02 CARAT**  
Color Grade **M**  
Clarity Grade **VS 2**  
Cut Grade **EXCELLENT**



**ADDITIONAL GRADING INFORMATION**  
Polish **EXCELLENT**  
Symmetry **EXCELLENT**  
Fluorescence **VERY SLIGHT**  
Inscription(s) **IGI 779650651**



March 25, 2026  
IGI Report No 779650651  
**ROUND BRILLIANT**  
Carat Weight **1.02 CARAT**  
Color Grade **M**  
Clarity Grade **VS 2**  
Depth **62.1%**  
Table **56%**  
Girdle **Medium (Faceted)**  
Cut **EXCELLENT**  
Polish **EXCELLENT**  
Symmetry **EXCELLENT**  
Fluorescence **VERY SLIGHT**  
Inscriptions(s) **IGI 779650651**

**ELECTRONIC COPY**

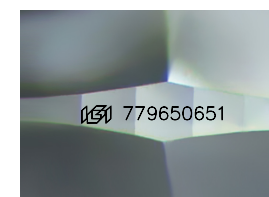
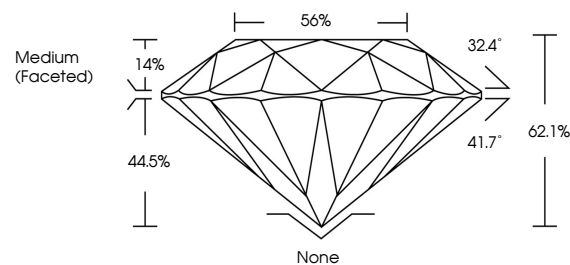
**DIAMOND REPORT**

March 25, 2026  
IGI Report Number **779650651**  
Description **NATURAL DIAMOND**  
Shape and Cutting Style **ROUND BRILLIANT**  
Measurements **6.45 - 6.48 X 4.02 MM**

**GRADING RESULTS**  
Carat Weight **1.02 CARAT**  
Color Grade **M**  
Clarity Grade **VS 2**  
Cut Grade **EXCELLENT**

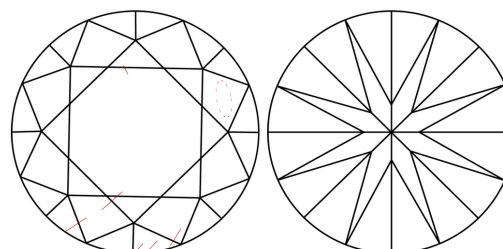
**ADDITIONAL GRADING INFORMATION**  
Polish **EXCELLENT**  
Symmetry **EXCELLENT**  
Fluorescence **VERY SLIGHT**  
Inscription(s) **IGI 779650651**

**PROPORTIONS**



Sample Image Used

**CLARITY CHARACTERISTICS**



**KEY TO SYMBOLS**

Red symbols indicate internal characteristics.  
Green symbols indicate external characteristics.

**COLOR**

D - F	G - J	K - M	N - R	S - Z	FANCY
Colorless	Near Colorless	Slightly Tinted	Very Light Color	Light Color	

**CLARITY**

FL	IF	VVS <sup>1-2</sup>	VS <sup>1-2</sup>	SJ <sup>1-2</sup>	I <sup>1-3</sup>
Flawless	Internally Flawless	Very Very Slightly Included	Very Slightly Included	Slightly Included	Included

