



ELECTRONIC COPY

778679930
Report verification at igi.org



June 11, 2026
IGI Report Number **778679930**
Description **NATURAL DIAMOND**
Shape and Cutting Style **ROUND BRILLIANT**
Measurements **8.01 - 8.08 X 5.03 MM**

GRADING RESULTS

Carat Weight **2.01 CARATS**
Color Grade **J**
Clarity Grade **VVS 1**
Cut Grade **EXCELLENT**

June 11, 2026
IGI Report Number **778679930**
Description **NATURAL DIAMOND**
Shape and Cutting Style **ROUND BRILLIANT**
Measurements **8.01 - 8.08 X 5.03 MM**

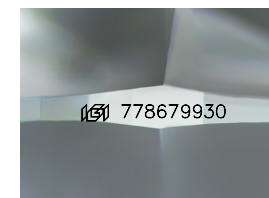
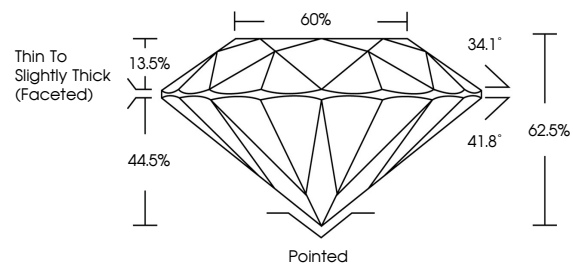
GRADING RESULTS

Carat Weight **2.01 CARATS**
Color Grade **J**
Clarity Grade **VVS 1**
Cut Grade **EXCELLENT**

ADDITIONAL GRADING INFORMATION

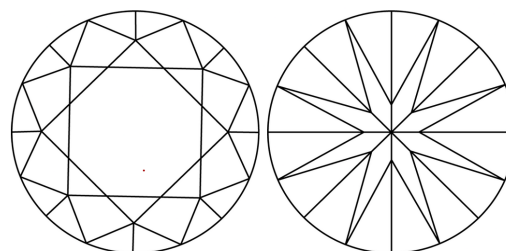
Polish **EXCELLENT**
Symmetry **EXCELLENT**
Fluorescence **NONE**
Inscription(s) **778679930**

PROPORTIONS



Sample Image Used

CLARITY CHARACTERISTICS



KEY TO SYMBOLS

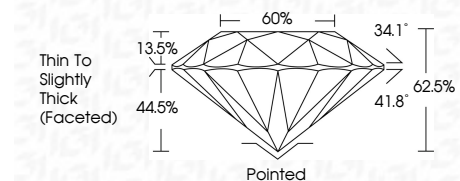
Red symbols indicate internal characteristics.
Green symbols indicate external characteristics.

COLOR

D - F	G - J	K - M	N - R	S - Z	FANCY
Colorless	Near Colorless	Slightly Tinted	Very Light Color	Light Color	

CLARITY

FL	IF	VVS ¹⁻²	VS ¹⁻²	SI ¹⁻²	I ¹⁻³
Flawless	Internally Flawless	Very Very Slightly Included	Very Slightly Included	Slightly Included	Included



ADDITIONAL GRADING INFORMATION

Polish **EXCELLENT**
Symmetry **EXCELLENT**
Fluorescence **NONE**
Inscription(s) **778679930**



IGI



June 11, 2026	IGI Report No 778679930	2.01 CARATS	J	VVS 1	EXCELLENT	60%	Thin To Slightly Thick (Faceted)	Pointed	EXCELLENT	EXCELLENT	NONE	778679930
ROUND BRILLIANT	8.01 - 8.08 X 5.03 MM	Color Grade	Cut Grade	Depth	Table	Girdle						