



ELECTRONIC COPY

778651700
Report verification at igi.org

DIAMOND REPORT

May 21, 2026
IGI Report Number **778651700**
Description **NATURAL DIAMOND**
Shape and Cutting Style **EMERALD CUT**
Measurements **7.71 X 5.50 X 3.74 MM**

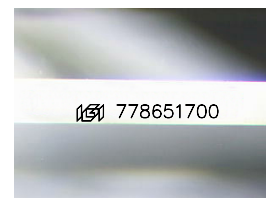
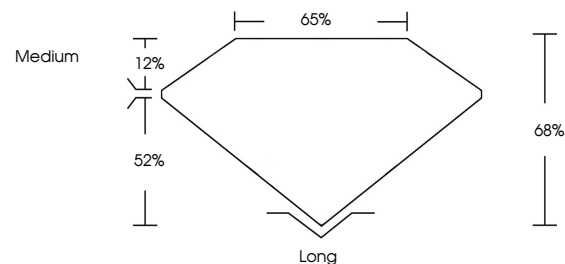
GRADING RESULTS

Carat Weight **1.51 CARAT**
Color Grade **I**
Clarity Grade **VS 2**
Cut Grade **VERY GOOD**

ADDITIONAL GRADING INFORMATION

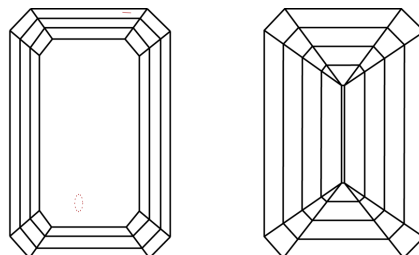
Polish **EXCELLENT**
Symmetry **EXCELLENT**
Fluorescence **NONE**
Inscription(s) **IGI 778651700**

PROPORTIONS



Sample Image Used

CLARITY CHARACTERISTICS



KEY TO SYMBOLS

Red symbols indicate internal characteristics.
Green symbols indicate external characteristics.

COLOR

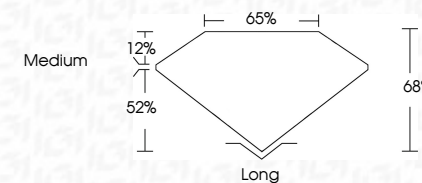
D - F	G - J	K - M	N - R	S - Z	FANCY
Colorless	Near Colorless	Slightly Tinted	Very Light Color	Light Color	

CLARITY

FL	IF	VVS ¹⁻²	VS ¹⁻²	SI ¹⁻²	I ¹⁻³
Flawless	Internally Flawless	Very Very Slightly Included	Very Slightly Included	Slightly Included	Included



May 21, 2026
IGI Report Number **778651700**
Description **NATURAL DIAMOND**
Shape and Cutting Style **EMERALD CUT**
Measurements **7.71 X 5.50 X 3.74 MM**
GRADING RESULTS
Carat Weight **1.51 CARAT**
Color Grade **I**
Clarity Grade **VS 2**
Cut Grade **VERY GOOD**



ADDITIONAL GRADING INFORMATION

Polish **EXCELLENT**
Symmetry **EXCELLENT**
Fluorescence **NONE**
Inscription(s) **IGI 778651700**



IGI



May 21, 2026
IGI Report No 778651700
EMERALD CUT
7.71 X 5.50 X 3.74 MM
1.51 CARAT
I
VS 2
VERY GOOD
65%
65%
Medium
Long
EXCELLENT
EXCELLENT
NONE
IGI 778651700