



**ELECTRONIC COPY**

778651693  
Report verification at [igi.org](http://igi.org)

**DIAMOND REPORT**

May 21, 2026  
IGI Report Number **778651693**  
Description **NATURAL DIAMOND**  
Shape and Cutting Style **PRINCESS CUT**  
Measurements **6.18 X 6.17 X 4.53 MM**

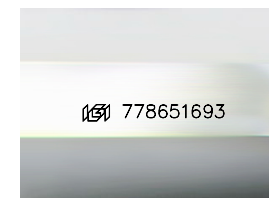
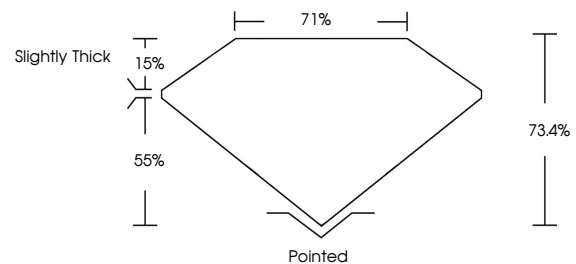
**GRADING RESULTS**

Carat Weight **1.51 CARAT**  
Color Grade **I**  
Clarity Grade **VVS 2**  
Cut Grade **VERY GOOD**

**ADDITIONAL GRADING INFORMATION**

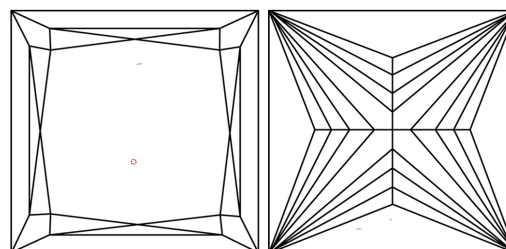
Polish **EXCELLENT**  
Symmetry **EXCELLENT**  
Fluorescence **NONE**  
Inscription(s) **778651693**

**PROPORTIONS**



Sample Image Used

**CLARITY CHARACTERISTICS**



**KEY TO SYMBOLS**

Red symbols indicate internal characteristics.  
Green symbols indicate external characteristics.

**COLOR**

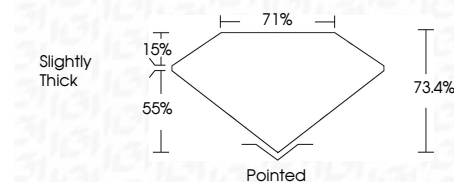
D - F	G - J	K - M	N - R	S - Z	FANCY
Colorless	Near Colorless	Slightly Tinted	Very Light Color	Light Color	

**CLARITY**

FL	IF	VVS <sup>1-2</sup>	VS <sup>1-2</sup>	SI <sup>1-2</sup>	I <sup>1-3</sup>
Flawless	Internally Flawless	Very Very Slightly Included	Very Slightly Included	Slightly Included	Included



May 21, 2026  
IGI Report Number **778651693**  
Description **NATURAL DIAMOND**  
Shape and Cutting Style **PRINCESS CUT**  
Measurements **6.18 X 6.17 X 4.53 MM**  
**GRADING RESULTS**  
Carat Weight **1.51 CARAT**  
Color Grade **I**  
Clarity Grade **VVS 2**  
Cut Grade **VERY GOOD**



**ADDITIONAL GRADING INFORMATION**

Polish **EXCELLENT**  
Symmetry **EXCELLENT**  
Fluorescence **NONE**  
Inscription(s) **778651693**



**IGI**



May 21, 2026	IGI Report No 778651693	PRINCESS CUT	6.18 X 6.17 X 4.53 MM	1.51 CARAT	I	VVS 2	VERY GOOD	73.4%	71%	Slightly Thick	Pointed	EXCELLENT	EXCELLENT	NONE	778651693
				Carat Weight	Color Grade	Clarity Grade	Cut Grade	Depth	Table	Girdle	Culet	Polish	Symmetry	Fluorescence	Inscription(s)