



ELECTRONIC COPY

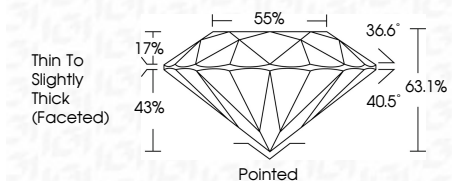
778651551
Report verification at igi.org



May 13, 2026
IGI Report Number **778651551**
Description **NATURAL DIAMOND**
Shape and Cutting Style **ROUND BRILLIANT**
Measurements **7.38 - 7.44 X 4.68 MM**

GRADING RESULTS

Carat Weight **1.60 CARAT**
Color Grade **K**
Clarity Grade **VVS 1**
Cut Grade **EXCELLENT**



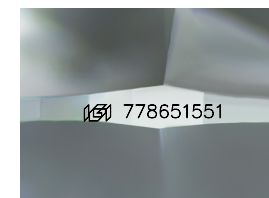
ADDITIONAL GRADING INFORMATION

Polish **EXCELLENT**
Symmetry **EXCELLENT**
Fluorescence **NONE**
Inscription(s) **IGI 778651551**



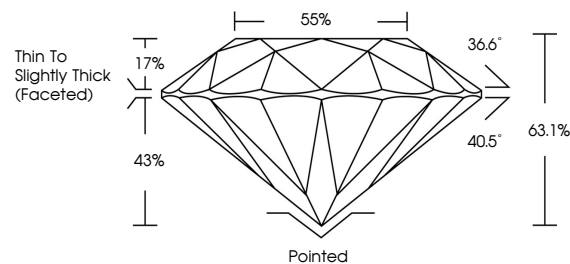
IGI

May 13, 2026
IGI Report No 778651551
ROUND BRILLIANT
1.60 CARAT **K**
Carat Weight **VVS 1**
Color Grade **EXCELLENT**
Clarity Grade **EXCELLENT**
Depth **63.1%**
Table **55%**
Girdle **Thin To Slightly Thick (Faceted)**
Culet **Pointed**
Polish **EXCELLENT**
Symmetry **EXCELLENT**
Fluorescence **NONE**
Inscriptions(s) **IGI 778651551**

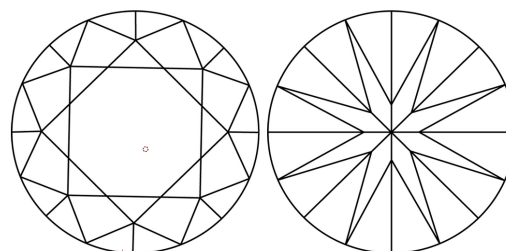


Sample Image Used

PROPORTIONS



CLARITY CHARACTERISTICS



KEY TO SYMBOLS

Red symbols indicate internal characteristics.
Green symbols indicate external characteristics.

COLOR

D - F	G - J	K - M	N - R	S - Z	FANCY
Colorless	Near Colorless	Slightly Tinted	Very Light Color	Light Color	

CLARITY

FL	IF	VVS 1-2	VS 1-2	SI 1-2	I 1-3
Flawless	Internally Flawless	Very Very Slightly Included	Very Slightly Included	Slightly Included	Included

