



ELECTRONIC COPY

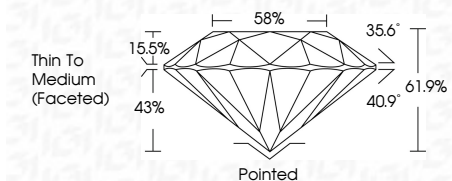
778617765
Report verification at igi.org



June 5, 2026
IGI Report Number **778617765**
Description **NATURAL DIAMOND**
Shape and Cutting Style **ROUND BRILLIANT**
Measurements **8.28 - 8.34 X 5.14 MM**

GRADING RESULTS

Carat Weight **2.18 CARATS**
Color Grade **I**
Clarity Grade **VVS 2**
Cut Grade **EXCELLENT**



ADDITIONAL GRADING INFORMATION

Polish **EXCELLENT**
Symmetry **EXCELLENT**
Fluorescence **VERY SLIGHT**
Inscription(s) **IGI 778617765**
Comments: IDEAL CUT ROUND BRILLIANT



IGI

June 5, 2026
IGI Report No 778617765
ROUND BRILLIANT
8.28 - 8.34 X 5.14 MM
2.18 CARATS
I
VVS 2
EXCELLENT
61.9%
88%
Thin To Medium (Faceted)
Pointed
EXCELLENT
EXCELLENT
VERY SLIGHT
IGI 778617765
Comments: IDEAL CUT ROUND BRILLIANT

DIAMOND REPORT

June 5, 2026
IGI Report Number **778617765**
Description **NATURAL DIAMOND**
Shape and Cutting Style **ROUND BRILLIANT**
Measurements **8.28 - 8.34 X 5.14 MM**

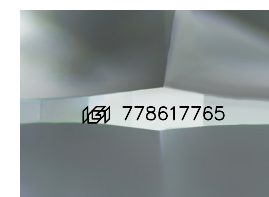
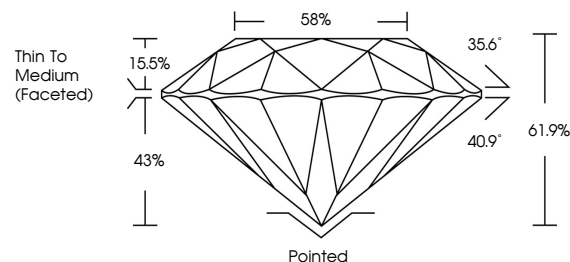
GRADING RESULTS

Carat Weight **2.18 CARATS**
Color Grade **I**
Clarity Grade **VVS 2**
Cut Grade **EXCELLENT**

ADDITIONAL GRADING INFORMATION

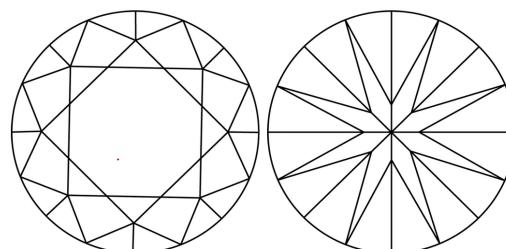
Polish **EXCELLENT**
Symmetry **EXCELLENT**
Fluorescence **VERY SLIGHT**
Inscription(s) **IGI 778617765**
Comments: IDEAL CUT ROUND BRILLIANT

PROPORTIONS



Sample Image Used

CLARITY CHARACTERISTICS



KEY TO SYMBOLS

Red symbols indicate internal characteristics.
Green symbols indicate external characteristics.

COLOR

D - F	G - J	K - M	N - R	S - Z	FANCY
Colorless	Near Colorless	Slightly Tinted	Very Light Color	Light Color	

CLARITY

FL	IF	VVS 1-2	VS 1-2	SI 1-2	I 1-3
Flawless	Internally Flawless	Very Very Slightly Included	Very Slightly Included	Slightly Included	Included

