



ELECTRONIC COPY

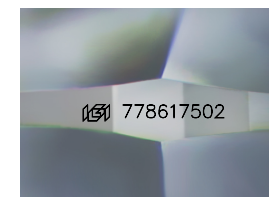
778617502
Report verification at igi.org



March 16, 2026
IGI Report Number **778617502**
Description **NATURAL DIAMOND**
Shape and Cutting Style **ROUND BRILLIANT**
Measurements **8.93 - 9.06 X 5.76 MM**

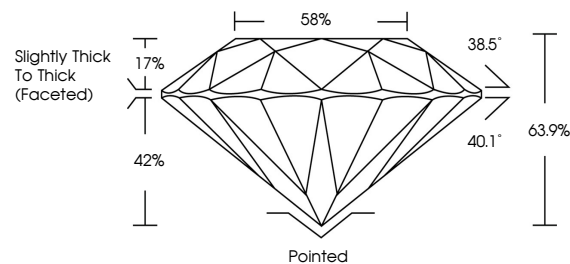
GRADING RESULTS

Carat Weight **3.03 CARATS**
Color Grade **J**
Clarity Grade **VS 1**
Cut Grade **VERY GOOD**

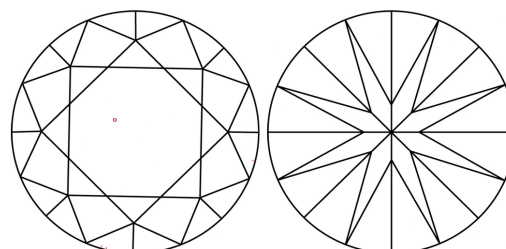


Sample Image Used

PROPORTIONS



CLARITY CHARACTERISTICS



KEY TO SYMBOLS

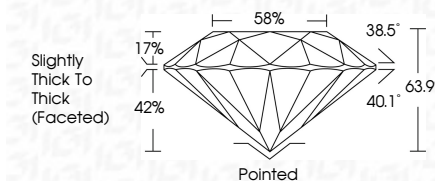
Red symbols indicate internal characteristics.
Green symbols indicate external characteristics.

COLOR

D - F	G - J	K - M	N - R	S - Z	FANCY
Colorless	Near Colorless	Slightly Tinted	Very Light Color	Light Color	

CLARITY

FL	IF	VVS ¹⁻²	VS ¹⁻²	SI ¹⁻²	I ¹⁻³
Flawless	Internally Flawless	Very Very Slightly Included	Very Slightly Included	Slightly Included	Included



ADDITIONAL GRADING INFORMATION

Polish **EXCELLENT**
Symmetry **EXCELLENT**
Fluorescence **NONE**
Inscription(s) **IGI 778617502**



IGI



March 16, 2026
IGI Report No 778617502
ROUND BRILLIANT
8.93 - 9.06 X 5.76 MM
3.03 CARATS J
Color Grade **VERY GOOD**
Clarity Grade **VS 1**
Depth 63.9%
Table 58%
Girdle Slightly Thick To Thick (Faceted)
Culet Pointed
Polish **EXCELLENT**
Symmetry **EXCELLENT**
Fluorescence **NONE**
Inscription(s) **IGI 778617502**