



ELECTRONIC COPY

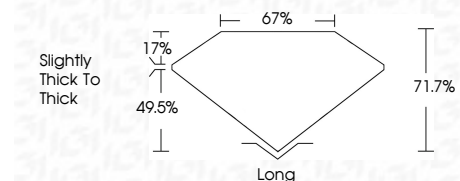
778617347
Report verification at igi.org



March 11, 2026
IGI Report Number **778617347**
Description **NATURAL DIAMOND**
Shape and Cutting Style **EMERALD CUT**
Measurements **7.86 X 5.84 X 4.19 MM**

GRADING RESULTS

Carat Weight **2.00 CARATS**
Color Grade **I**
Clarity Grade **VS 2**
Cut Grade **VERY GOOD**



ADDITIONAL GRADING INFORMATION

Polish **EXCELLENT**
Symmetry **EXCELLENT**
Fluorescence **NONE**
Inscription(s) **IGI 778617347**



IGI

| | | | | | | | | | | | | | | |
|----------------|-------------------------|-------------|-------------|---|------|-----------|-------|-----|-------------------------|------|-----------|-----------|------|---------------|
| March 11, 2026 | IGI Report No 778617347 | EMERALD CUT | 2.00 CARATS | I | VS 2 | VERY GOOD | 71.7% | 67% | Slightly thick to thick | Long | EXCELLENT | EXCELLENT | NONE | IGI 778617347 |
| IGI Report No | 778617347 | EMERALD CUT | 2.00 CARATS | I | VS 2 | VERY GOOD | 71.7% | 67% | Slightly thick to thick | Long | EXCELLENT | EXCELLENT | NONE | IGI 778617347 |
| Carat Weight | 7.86 X 5.84 X 4.19 MM | EMERALD CUT | 2.00 CARATS | I | VS 2 | VERY GOOD | 71.7% | 67% | Slightly thick to thick | Long | EXCELLENT | EXCELLENT | NONE | IGI 778617347 |
| Color Grade | | | | | | | | | | | | | | |
| Clarity Grade | | | | | | | | | | | | | | |
| Cut Grade | | | | | | | | | | | | | | |
| Depth | | | | | | | | | | | | | | |
| Table | | | | | | | | | | | | | | |
| Grille | | | | | | | | | | | | | | |
| Culet | | | | | | | | | | | | | | |
| Polish | | | | | | | | | | | | | | |
| Symmetry | | | | | | | | | | | | | | |
| Fluorescence | | | | | | | | | | | | | | |
| Inscription(s) | | | | | | | | | | | | | | |

DIAMOND REPORT

March 11, 2026
IGI Report Number **778617347**
Description **NATURAL DIAMOND**
Shape and Cutting Style **EMERALD CUT**
Measurements **7.86 X 5.84 X 4.19 MM**

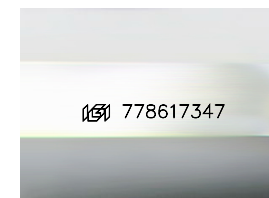
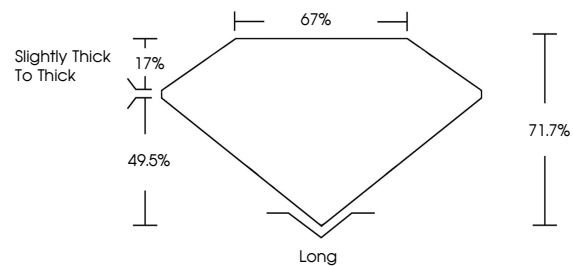
GRADING RESULTS

Carat Weight **2.00 CARATS**
Color Grade **I**
Clarity Grade **VS 2**
Cut Grade **VERY GOOD**

ADDITIONAL GRADING INFORMATION

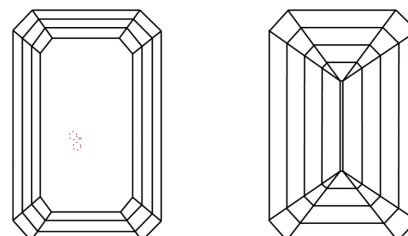
Polish **EXCELLENT**
Symmetry **EXCELLENT**
Fluorescence **NONE**
Inscription(s) **IGI 778617347**

PROPORTIONS



Sample Image Used

CLARITY CHARACTERISTICS



KEY TO SYMBOLS

Red symbols indicate internal characteristics.
Green symbols indicate external characteristics.

COLOR

| D - F | G - J | K - M | N - R | S - Z | FANCY |
|-----------|----------------|-----------------|------------------|-------------|-------|
| Colorless | Near Colorless | Slightly Tinted | Very Light Color | Light Color | |

CLARITY

| FL | IF | VVS 1-2 | VS 1-2 | SI 1-2 | I 1-3 |
|----------|---------------------|-----------------------------|------------------------|-------------------|----------|
| Flawless | Internally Flawless | Very Very Slightly Included | Very Slightly Included | Slightly Included | Included |

