



ELECTRONIC COPY

777616101
Report verification at igi.org

DIAMOND REPORT

March 4, 2026
IGI Report Number **777616101**
Description **NATURAL DIAMOND**
Shape and Cutting Style **ROUND BRILLIANT**
Measurements **7.64 - 7.75 X 4.87 MM**

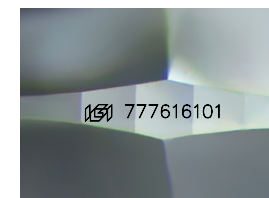
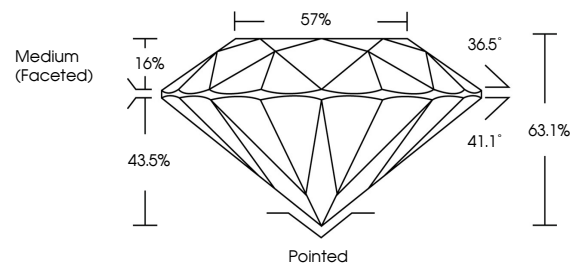
GRADING RESULTS

Carat Weight **1.80 CARAT**
Color Grade **G**
Clarity Grade **VVS 1**
Cut Grade **EXCELLENT**

ADDITIONAL GRADING INFORMATION

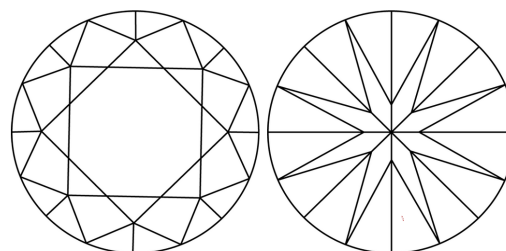
Polish **EXCELLENT**
Symmetry **EXCELLENT**
Fluorescence **NONE**
Inscription(s) **777616101**

PROPORTIONS



Sample Image Used

CLARITY CHARACTERISTICS



KEY TO SYMBOLS

Red symbols indicate internal characteristics.
Green symbols indicate external characteristics.

COLOR

D - F	G - J	K - M	N - R	S - Z	FANCY
Colorless	Near Colorless	Slightly Tinted	Very Light Color	Light Color	

CLARITY

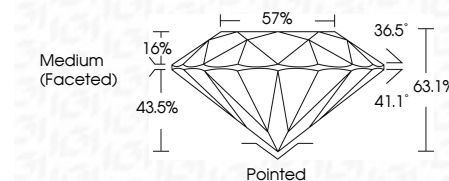
FL	IF	VVS ¹⁻²	VS ¹⁻²	SI ¹⁻²	I ¹⁻³
Flawless	Internally Flawless	Very Very Slightly Included	Very Slightly Included	Slightly Included	Included



March 4, 2026
IGI Report Number **777616101**
Description **NATURAL DIAMOND**
Shape and Cutting Style **ROUND BRILLIANT**
Measurements **7.64 - 7.75 X 4.87 MM**

GRADING RESULTS

Carat Weight **1.80 CARAT**
Color Grade **G**
Clarity Grade **VVS 1**
Cut Grade **EXCELLENT**



ADDITIONAL GRADING INFORMATION

Polish **EXCELLENT**
Symmetry **EXCELLENT**
Fluorescence **NONE**
Inscription(s) **777616101**



IGI

March 4, 2026
IGI Report No 777616101
ROUND BRILLIANT
7.64 - 7.75 X 4.87 MM
1.80 CARAT
Color Grade **G**
Clarity Grade **VVS 1**
Depth **EXCELLENT**
Table **63.1%**
Girdle **57%**
Medium (Faceted)
Culet **Pointed**
Polish **EXCELLENT**
Symmetry **EXCELLENT**
Fluorescence **NONE**
Inscriptions(s) **777616101**