



ELECTRONIC COPY

776699010
Report verification at igi.org



March 2, 2026
IGI Report Number **776699010**
Description **NATURAL DIAMOND**
Shape and Cutting Style **EMERALD CUT**
Measurements **7.55 X 5.38 X 3.64 MM**
GRADING RESULTS
Carat Weight **1.51 CARAT**
Color Grade **I**
Clarity Grade **VVS 1**
Cut Grade **VERY GOOD**

DIAMOND REPORT

March 2, 2026
IGI Report Number **776699010**
Description **NATURAL DIAMOND**
Shape and Cutting Style **EMERALD CUT**
Measurements **7.55 X 5.38 X 3.64 MM**

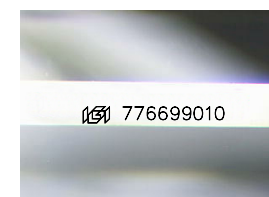
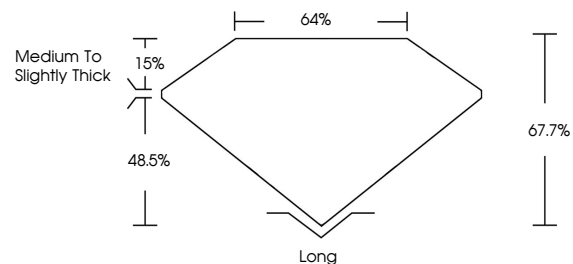
GRADING RESULTS

Carat Weight **1.51 CARAT**
Color Grade **I**
Clarity Grade **VVS 1**
Cut Grade **VERY GOOD**

ADDITIONAL GRADING INFORMATION

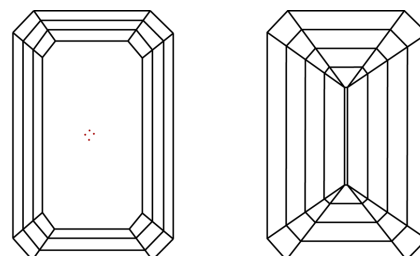
Polish **EXCELLENT**
Symmetry **EXCELLENT**
Fluorescence **NONE**
Inscription(s) **776699010**

PROPORTIONS



Sample Image Used

CLARITY CHARACTERISTICS



KEY TO SYMBOLS

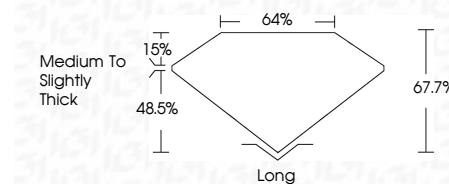
Red symbols indicate internal characteristics.
Green symbols indicate external characteristics.

COLOR

D - F	G - J	K - M	N - R	S - Z	FANCY
Colorless	Near Colorless	Slightly Tinted	Very Light Color	Light Color	

CLARITY

FL	IF	VVS 1-2	VS 1-2	SI 1-2	I 1-3
Flawless	Internally Flawless	Very Very Slightly Included	Very Slightly Included	Slightly Included	Included



ADDITIONAL GRADING INFORMATION

Polish **EXCELLENT**
Symmetry **EXCELLENT**
Fluorescence **NONE**
Inscription(s) **776699010**



IGI



March 2, 2026
IGI Report No 776699010
EMERALD CUT
7.55 X 5.38 X 3.64 MM
1.51 CARAT
I
VVS 1
VERY GOOD
67.7%
64%
Medium To Slightly Thick
Long
EXCELLENT
EXCELLENT
NONE
IGI 776699010