



ELECTRONIC COPY

776647251
Report verification at igi.org



February 25, 2026
IGI Report Number **776647251**
Description **NATURAL DIAMOND**
Shape and Cutting Style **ROUND BRILLIANT**
Measurements **6.53 - 6.57 X 4.02 MM**

GRADING RESULTS

Carat Weight **1.06 CARAT**
Color Grade **J**
Clarity Grade **VS 2**
Cut Grade **EXCELLENT**

February 25, 2026
IGI Report Number **776647251**
Description **NATURAL DIAMOND**
Shape and Cutting Style **ROUND BRILLIANT**
Measurements **6.53 - 6.57 X 4.02 MM**

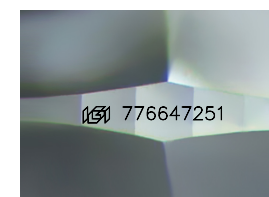
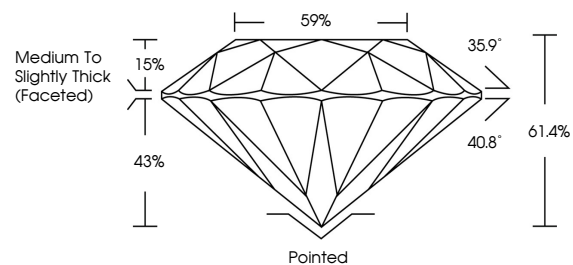
GRADING RESULTS

Carat Weight **1.06 CARAT**
Color Grade **J**
Clarity Grade **VS 2**
Cut Grade **EXCELLENT**

ADDITIONAL GRADING INFORMATION

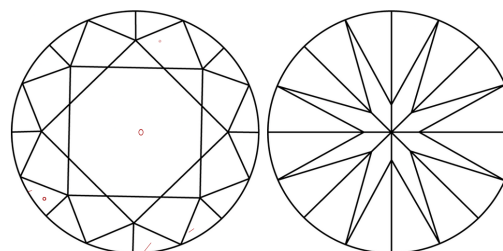
Polish **EXCELLENT**
Symmetry **EXCELLENT**
Fluorescence **NONE**
Inscription(s) **776647251**
Comments: IDEAL CUT ROUND BRILLIANT

PROPORTIONS



Sample Image Used

CLARITY CHARACTERISTICS



KEY TO SYMBOLS

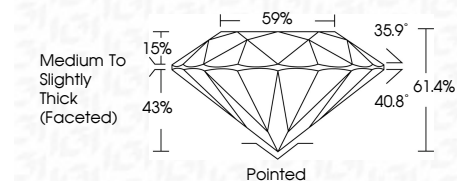
Red symbols indicate internal characteristics.
Green symbols indicate external characteristics.

COLOR

D - F	G - J	K - M	N - R	S - Z	FANCY
Colorless	Near Colorless	Slightly Tinted	Very Light Color	Light Color	

CLARITY

FL	IF	VVS 1-2	VS 1-2	SI 1-2	I 1-3
Flawless	Internally Flawless	Very Very Slightly Included	Very Slightly Included	Slightly Included	Included



ADDITIONAL GRADING INFORMATION

Polish **EXCELLENT**
Symmetry **EXCELLENT**
Fluorescence **NONE**
Inscription(s) **776647251**
Comments: IDEAL CUT ROUND BRILLIANT



IGI



February 25, 2026
IGI Report No 776647251
ROUND BRILLIANT
1.06 CARAT
J
VS 2
EXCELLENT
61.4%
59%
Medium To Slightly Thick (Faceted)
Pointed
EXCELLENT
EXCELLENT
NONE
None
776647251
Comments: IDEAL CUT ROUND BRILLIANT