



**DIAMOND REPORT**

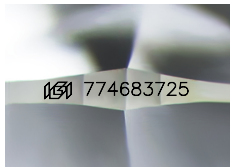
April 13, 2026  
IGI Report Number **774683725**  
Description **NATURAL DIAMOND**  
Shape and Cutting Style **ROUND BRILLIANT**  
Measurements **5.63 - 5.67 X 3.55 MM**

**GRADING RESULTS**

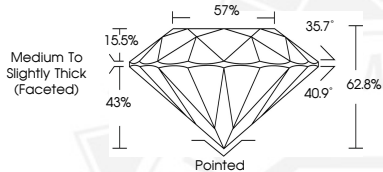
Carat Weight **0.70 CARAT**  
Color Grade **F**  
Clarity Grade **VVS 2**  
Cut Grade **EXCELLENT**

**ADDITIONAL GRADING INFORMATION**

Polish **EXCELLENT**  
Symmetry **EXCELLENT**  
Fluorescence **NONE**  
Identification Features **PINPOINT**  
Inscription(s) **IGI 774683725**



Sample Image Used



April 13, 2026  
IGI Report Number **774683725**  
**ROUND BRILLIANT**  
**NATURAL DIAMOND**  
**5.63 - 5.67 X 3.55 MM**  
Carat Weight **0.70 CARAT**  
Color Grade **F**  
Clarity Grade **VVS 2**  
Cut Grade **EXCELLENT**  
Polish **EXCELLENT**  
Symmetry **EXCELLENT**  
Fluorescence **NONE**  
Inscription(s) **IGI 774683725**



April 13, 2026  
IGI Report Number **774683725**  
**ROUND BRILLIANT**  
**NATURAL DIAMOND**  
**5.63 - 5.67 X 3.55 MM**  
Carat Weight **0.70 CARAT**  
Color Grade **F**  
Clarity Grade **VVS 2**  
Cut Grade **EXCELLENT**  
Polish **EXCELLENT**  
Symmetry **EXCELLENT**  
Fluorescence **NONE**  
Inscription(s) **IGI 774683725**



THIS DOCUMENT WAS PRODUCED WITH THE FOLLOWING SECURITY MEASURES: SPECIAL DOCUMENT PAPER, INK SCREENS, WATERMARK, BACKGROUND DESIGNS, HOLOGRAM AND OTHER SECURITY FEATURES NOT LISTED AND DO EXCEED DOCUMENT SECURITY INDUSTRY GUIDELINES.