



DIAMOND REPORT

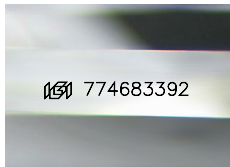
April 1, 2026
 IGI Report Number **774683392**
 Description **NATURAL DIAMOND**
 Shape and Cutting Style **CUT CORNERED RECTANGULAR MODIFIED BRILLIANT**
 Measurements **6.79 X 4.40 X 2.73 MM**

GRADING RESULTS

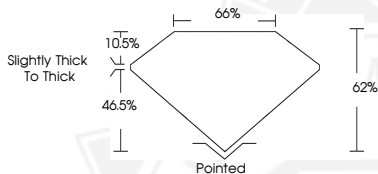
Carat Weight **0.70 CARAT**
 Color Grade **F**
 Clarity Grade **VVS 2**
 Cut Grade **VERY GOOD**

ADDITIONAL GRADING INFORMATION

Polish **EXCELLENT**
 Symmetry **EXCELLENT**
 Fluorescence **VERY SLIGHT**
 Identification Features **FEATHER**
 Inscription(s) **IGI 774683392**



Sample Image Used



April 1, 2026
 IGI Report Number **774683392**
 CUT CORNERED RECTANGULAR
 MODIFIED BRILLIANT
 NATURAL DIAMOND
6.79 X 4.40 X 2.73 MM
 Carat Weight **0.70 CARAT**
 Color Grade **F**
 Clarity Grade **VVS 2**
 Cut Grade **VERY GOOD**
 Polish **EXCELLENT**
 Symmetry **EXCELLENT**
 Fluorescence **VERY SLIGHT**
 Inscription(s) **IGI 774683392**



April 1, 2026
 IGI Report Number **774683392**
 CUT CORNERED RECTANGULAR
 MODIFIED BRILLIANT
 NATURAL DIAMOND
6.79 X 4.40 X 2.73 MM
 Carat Weight **0.70 CARAT**
 Color Grade **F**
 Clarity Grade **VVS 2**
 Cut Grade **VERY GOOD**
 Polish **EXCELLENT**
 Symmetry **EXCELLENT**
 Fluorescence **VERY SLIGHT**
 Inscription(s) **IGI 774683392**



THIS DOCUMENT WAS PRODUCED WITH THE FOLLOWING SECURITY MEASURES: SPECIAL DOCUMENT PAPER, INK SCREENS, WATERMARK, BACKGROUND DESIGNS, HOLOGRAM AND OTHER SECURITY FEATURES NOT LISTED AND DO EXCEED DOCUMENT SECURITY INDUSTRY GUIDELINES.