



DIAMOND REPORT

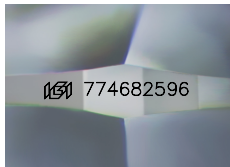
March 6, 2026
IGI Report Number **774682596**
Description **NATURAL DIAMOND**
Shape and Cutting Style **ROUND BRILLIANT**
Measurements **4.66 - 4.69 X 2.90 MM**

GRADING RESULTS

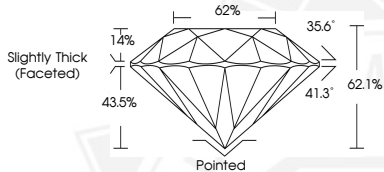
Carat Weight **0.40 CARAT**
Color Grade **J**
Clarity Grade **VVS 2**
Cut Grade **EXCELLENT**

ADDITIONAL GRADING INFORMATION

Polish **EXCELLENT**
Symmetry **EXCELLENT**
Fluorescence **VERY SLIGHT**
Identification Features **FEATHER**
Inscription(s) **IGI 774682596**



Sample Image Used



March 6, 2026
IGI Report Number **774682596**
ROUND BRILLIANT
NATURAL DIAMOND
4.66 - 4.69 X 2.90 MM
Carat Weight **0.40 CARAT**
Color Grade **J**
Clarity Grade **VVS 2**
Cut Grade **EXCELLENT**
Polish **EXCELLENT**
Symmetry **EXCELLENT**
Fluorescence **VERY SLIGHT**
Inscription(s) **IGI 774682596**



March 6, 2026
IGI Report Number **774682596**
ROUND BRILLIANT
NATURAL DIAMOND
4.66 - 4.69 X 2.90 MM
Carat Weight **0.40 CARAT**
Color Grade **J**
Clarity Grade **VVS 2**
Cut Grade **EXCELLENT**
Polish **EXCELLENT**
Symmetry **EXCELLENT**
Fluorescence **VERY SLIGHT**
Inscription(s) **IGI 774682596**



THIS DOCUMENT WAS PRODUCED WITH THE FOLLOWING SECURITY MEASURES: SPECIAL DOCUMENT PAPER, INK SCREENS, WATERMARK, BACKGROUND DESIGNS, HOLOGRAM AND OTHER SECURITY FEATURES NOT LISTED AND DO EXCEED DOCUMENT SECURITY INDUSTRY GUIDELINES.