



March 4, 2026  
**IGI Report Number 774680542**  
**ROUND BRILLIANT**  
**NATURAL DIAMOND**  
**4.74 - 4.77 X 2.83 MM**  
 Carat Weight **0.40 CARAT**  
 Color Grade **G**  
 Clarity Grade **SI 1**  
 Cut Grade **EXCELLENT**  
 Polish **EXCELLENT**  
 Symmetry **EXCELLENT**  
 Fluorescence **VERY SLIGHT**  
 Inscription(s) **IGI 774680542**

**DIAMOND REPORT**

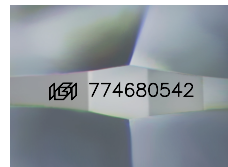
March 4, 2026  
 IGI Report Number **774680542**  
 Description **NATURAL DIAMOND**  
 Shape and Cutting Style **ROUND BRILLIANT**  
 Measurements **4.74 - 4.77 X 2.83 MM**

**GRADING RESULTS**

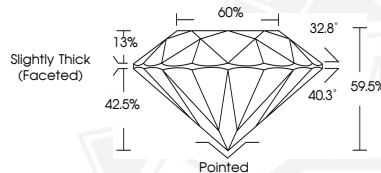
Carat Weight **0.40 CARAT**  
 Color Grade **G**  
 Clarity Grade **SI 1**  
 Cut Grade **EXCELLENT**

**ADDITIONAL GRADING INFORMATION**

Polish **EXCELLENT**  
 Symmetry **EXCELLENT**  
 Fluorescence **VERY SLIGHT**  
 Identification Features **FEATHER, CAVITY, CLOUD, CRYSTAL**  
 Inscription(s) **IGI 774680542**



Sample Image Used



March 4, 2026  
**IGI Report Number 774680542**  
**ROUND BRILLIANT**  
**NATURAL DIAMOND**  
**4.74 - 4.77 X 2.83 MM**  
 Carat Weight **0.40 CARAT**  
 Color Grade **G**  
 Clarity Grade **SI 1**  
 Cut Grade **EXCELLENT**  
 Polish **EXCELLENT**  
 Symmetry **EXCELLENT**  
 Fluorescence **VERY SLIGHT**  
 Inscription(s) **IGI 774680542**

THIS DOCUMENT WAS PRODUCED WITH THE FOLLOWING SECURITY MEASURES: SPECIAL DOCUMENT PAPER, INK SCREENS, WATERMARK, BACKGROUND DESIGNS, HOLOGRAM AND OTHER SECURITY FEATURES NOT LISTED AND DO EXCEED DOCUMENT SECURITY INDUSTRY GUIDELINES.

For terms & conditions and to verify this report, please visit [www.igi.org](http://www.igi.org)