



**ELECTRONIC COPY**

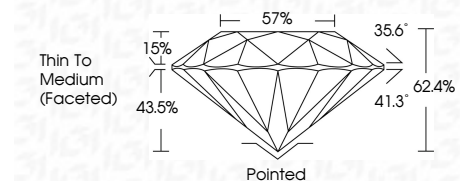
774675189  
Report verification at [igi.org](http://igi.org)



June 23, 2026  
IGI Report Number **774675189**  
Description **NATURAL DIAMOND**  
Shape and Cutting Style **ROUND BRILLIANT**  
Measurements **8.84 - 8.90 X 5.54 MM**

**GRADING RESULTS**

Carat Weight **2.70 CARATS**  
Color Grade **G**  
Clarity Grade **VVS 1**  
Cut Grade **EXCELLENT**



**ADDITIONAL GRADING INFORMATION**

Polish **EXCELLENT**  
Symmetry **EXCELLENT**  
Fluorescence **NONE**  
Inscription(s) **(IGI) 774675189**  
Comments: IDEAL CUT ROUND BRILLIANT



**IGI**

June 23, 2026  
IGI Report No 774675189  
**ROUND BRILLIANT**  
8.84 - 8.90 X 5.54 MM  
2.70 CARATS  
G  
VVS 1  
EXCELLENT  
62.4%  
57%  
Thin To Medium (Faceted)  
Pointed  
EXCELLENT  
EXCELLENT  
NONE  
(IGI) 774675189  
Comments: IDEAL CUT ROUND BRILLIANT

**DIAMOND REPORT**

June 23, 2026  
IGI Report Number **774675189**  
Description **NATURAL DIAMOND**  
Shape and Cutting Style **ROUND BRILLIANT**  
Measurements **8.84 - 8.90 X 5.54 MM**

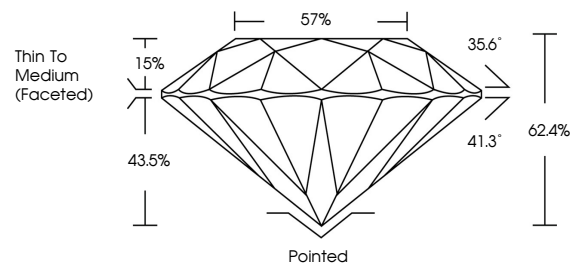
**GRADING RESULTS**

Carat Weight **2.70 CARATS**  
Color Grade **G**  
Clarity Grade **VVS 1**  
Cut Grade **EXCELLENT**

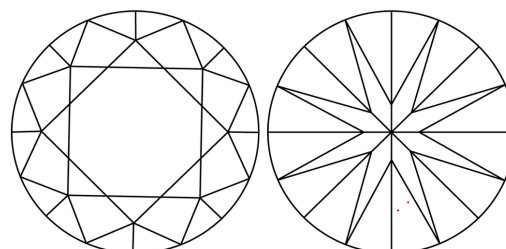
**ADDITIONAL GRADING INFORMATION**

Polish **EXCELLENT**  
Symmetry **EXCELLENT**  
Fluorescence **NONE**  
Inscription(s) **(IGI) 774675189**  
Comments: IDEAL CUT ROUND BRILLIANT

**PROPORTIONS**

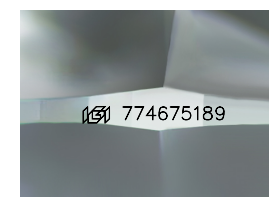


**CLARITY CHARACTERISTICS**



**KEY TO SYMBOLS**

Red symbols indicate internal characteristics.  
Green symbols indicate external characteristics.



Sample Image Used

**COLOR**

D - F	G - J	K - M	N - R	S - Z	FANCY
Colorless	Near Colorless	Slightly Tinted	Very Light Color	Light Color	

**CLARITY**

FL	IF	VVS 1-2	VS 1-2	SI 1-2	I 1-3
Flawless	Internally Flawless	Very Very Slightly Included	Very Slightly Included	Slightly Included	Included

