



**ELECTRONIC COPY**

774672780  
Report verification at [igi.org](http://igi.org)



May 9, 2026  
IGI Report Number **774672780**  
Description **NATURAL DIAMOND**  
Shape and Cutting Style **CUT CORNERED  
RECTANGULAR MODIFIED  
BRILLIANT**  
Measurements **9.55 X 7.50 X 5.01 MM**  
**GRADING RESULTS**  
Carat Weight **3.01 CARATS**  
Color Grade **I**  
Clarity Grade **SI 2**  
Cut Grade **VERY GOOD**

**DIAMOND REPORT**

May 9, 2026  
IGI Report Number **774672780**  
Description **NATURAL DIAMOND**  
Shape and Cutting Style **CUT CORNERED RECTANGULAR  
MODIFIED BRILLIANT**  
Measurements **9.55 X 7.50 X 5.01 MM**

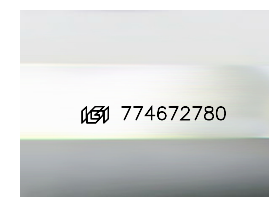
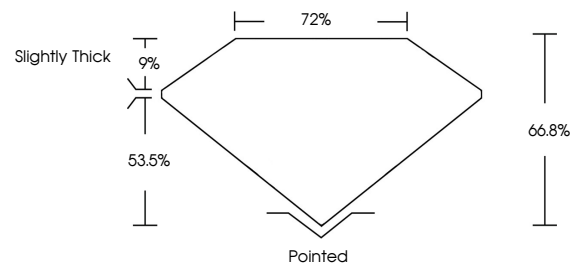
**GRADING RESULTS**

Carat Weight **3.01 CARATS**  
Color Grade **I**  
Clarity Grade **SI 2**  
Cut Grade **VERY GOOD**

**ADDITIONAL GRADING INFORMATION**

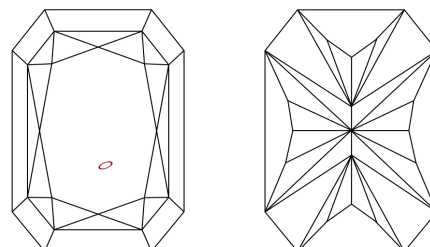
Polish **EXCELLENT**  
Symmetry **EXCELLENT**  
Fluorescence **NONE**  
Inscription(s) **774672780**

**PROPORTIONS**



Sample Image Used

**CLARITY CHARACTERISTICS**



**KEY TO SYMBOLS**

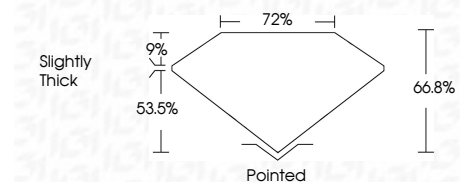
Red symbols indicate internal characteristics.  
Green symbols indicate external characteristics.

**COLOR**

D - F	G - J	K - M	N - R	S - Z	FANCY
Colorless	Near Colorless	Slightly Tinted	Very Light Color	Light Color	

**CLARITY**

FL	IF	VVS <sup>1-2</sup>	VS <sup>1-2</sup>	SI <sup>1-2</sup>	I <sup>1-3</sup>
Flawless	Internally Flawless	Very Very Slightly Included	Very Slightly Included	Slightly Included	Included



**ADDITIONAL GRADING INFORMATION**

Polish **EXCELLENT**  
Symmetry **EXCELLENT**  
Fluorescence **NONE**  
Inscription(s) **774672780**



**IGI**



May 9, 2026  
IGI Report No 774672780  
CUT CORNERED RECT. MODIFIED BRILLIANT  
9.55 X 7.50 X 5.01 MM  
3.01 CARATS  
I  
SI 2  
VERY GOOD  
66.8%  
72%  
Slightly Thick  
Pointed  
EXCELLENT  
EXCELLENT  
NONE  
774672780