



ELECTRONIC COPY

774632690
Report verification at igi.org



February 26, 2026

IGI Report Number **774632690**

Description **NATURAL DIAMOND**

Shape and Cutting Style **PRINCESS CUT**

Measurements **5.38 X 5.30 X 3.97 MM**

GRADING RESULTS

Carat Weight **1.02 CARAT**

Color Grade **I**

Clarity Grade **VVS 1**

Cut Grade **VERY GOOD**

DIAMOND REPORT

February 26, 2026

IGI Report Number **774632690**

Description **NATURAL DIAMOND**

Shape and Cutting Style **PRINCESS CUT**

Measurements **5.38 X 5.30 X 3.97 MM**

GRADING RESULTS

Carat Weight **1.02 CARAT**

Color Grade **I**

Clarity Grade **VVS 1**

Cut Grade **VERY GOOD**

ADDITIONAL GRADING INFORMATION

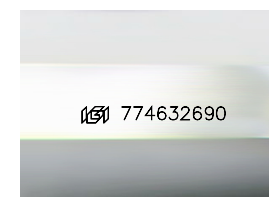
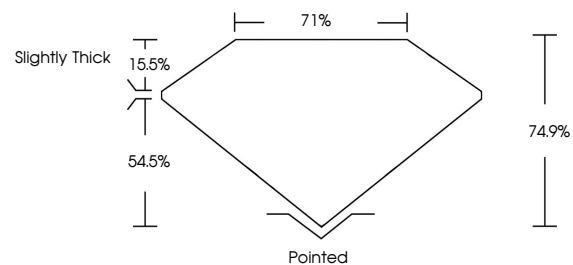
Polish **EXCELLENT**

Symmetry **EXCELLENT**

Fluorescence **NONE**

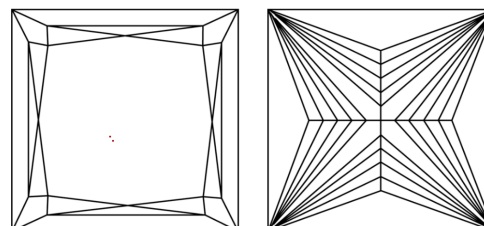
Inscription(s) **774632690**

PROPORTIONS



Sample Image Used

CLARITY CHARACTERISTICS



KEY TO SYMBOLS

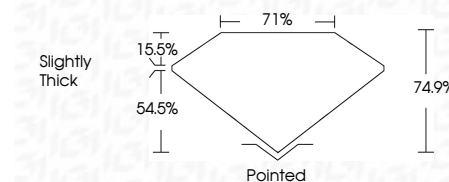
Red symbols indicate internal characteristics.
Green symbols indicate external characteristics.

COLOR

D - F	G - J	K - M	N - R	S - Z	FANCY
Colorless	Near Colorless	Slightly Tinted	Very Light Color	Light Color	

CLARITY

FL	IF	VVS ¹⁻²	VS ¹⁻²	SI ¹⁻²	I ¹⁻³
Flawless	Internally Flawless	Very Very Slightly Included	Very Slightly Included	Slightly Included	Included



ADDITIONAL GRADING INFORMATION

Polish **EXCELLENT**

Symmetry **EXCELLENT**

Fluorescence **NONE**

Inscription(s) **774632690**



IGI



February 26, 2026	1.02 CARAT	I	VVS 1	74.9%	71%	Slightly Thick	Pointed	EXCELLENT	EXCELLENT	NONE	774632690
IGI Report No 774632690	5.38 X 5.30 X 3.97 MM	PRINCESS CUT	VERY GOOD	74.9%	71%	Slightly Thick	Pointed	EXCELLENT	EXCELLENT	NONE	774632690
Carat Weight	Color Grade	Cut Grade	Depth	Table	Girdle	Culet	Polish	Symmetry	Fluorescence	Inscription(s)	