



**INTERNATIONAL  
GEMOLOGICAL  
INSTITUTE**

**DIAMOND REPORT**

February 13, 2026  
 IGI Report Number **771613255**  
 Description **NATURAL DIAMOND**  
 Shape and Cutting Style **PRINCESS CUT**  
 Measurements **4.89 X 4.89 X 3.42 MM**

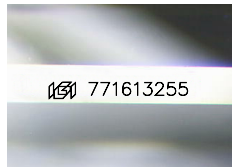
**GRADING RESULTS**

Carat Weight **0.74 CARAT**  
 Color Grade **I**  
 Clarity Grade **VVS 1**  
 Cut Grade **VERY GOOD**

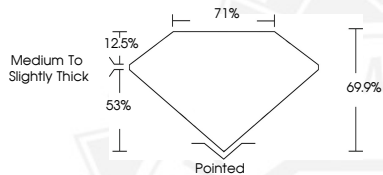
**ADDITIONAL GRADING INFORMATION**

Polish **EXCELLENT**  
 Symmetry **EXCELLENT**  
 Fluorescence **NONE**  
 Identification Features **PINPOINT**  
 Inscription(s) **IGI 771613255**

**ELECTRONIC COPY**



Sample Image Used



February 13, 2026  
 IGI Report Number **771613255**  
**PRINCESS CUT**  
**NATURAL DIAMOND**  
**4.89 X 4.89 X 3.42 MM**  
 Carat Weight **0.74 CARAT**  
 Color Grade **I**  
 Clarity Grade **VVS 1**  
 Cut Grade **VERY GOOD**  
 Polish **EXCELLENT**  
 Symmetry **EXCELLENT**  
 Fluorescence **NONE**  
 Inscription(s) **IGI 771613255**



February 13, 2026  
 IGI Report Number **771613255**  
**PRINCESS CUT**  
**NATURAL DIAMOND**  
**4.89 X 4.89 X 3.42 MM**  
 Carat Weight **0.74 CARAT**  
 Color Grade **I**  
 Clarity Grade **VVS 1**  
 Cut Grade **VERY GOOD**  
 Polish **EXCELLENT**  
 Symmetry **EXCELLENT**  
 Fluorescence **NONE**  
 Inscription(s) **IGI 771613255**



THIS DOCUMENT WAS PRODUCED WITH THE FOLLOWING SECURITY MEASURES: SPECIAL DOCUMENT PAPER, INK SCREENS, WATERMARK, BACKGROUND DESIGNS, HOLOGRAM AND OTHER SECURITY FEATURES NOT LISTED AND DO EXCEED DOCUMENT SECURITY INDUSTRY GUIDELINES.

For terms & conditions and to verify this report, please visit [www.igi.org](http://www.igi.org)