



**ELECTRONIC COPY**

770689938  
Report verification at [igi.org](http://igi.org)



February 9, 2026  
IGI Report Number **770689938**  
Description **NATURAL DIAMOND**  
Shape and Cutting Style **ROUND BRILLIANT**  
Measurements **6.63 - 6.74 X 4.17 MM**

**GRADING RESULTS**

Carat Weight **1.13 CARAT**  
Color Grade **H**  
Clarity Grade **VVS 1**  
Cut Grade **EXCELLENT**

February 9, 2026  
IGI Report Number **770689938**  
Description **NATURAL DIAMOND**  
Shape and Cutting Style **ROUND BRILLIANT**  
Measurements **6.63 - 6.74 X 4.17 MM**

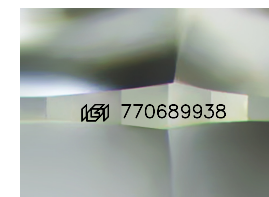
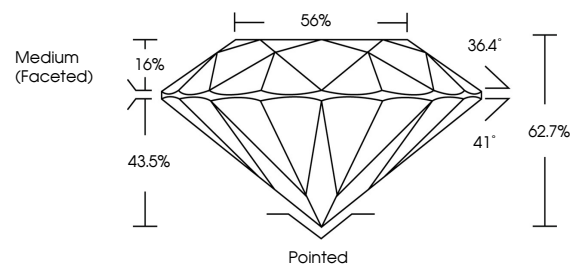
**GRADING RESULTS**

Carat Weight **1.13 CARAT**  
Color Grade **H**  
Clarity Grade **VVS 1**  
Cut Grade **EXCELLENT**

**ADDITIONAL GRADING INFORMATION**

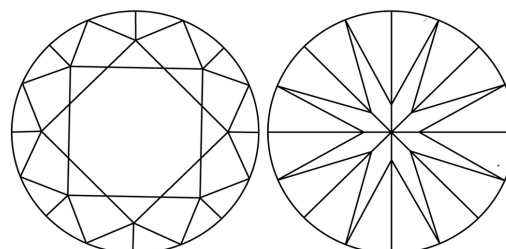
Polish **EXCELLENT**  
Symmetry **EXCELLENT**  
Fluorescence **NONE**  
Inscription(s) **770689938**

**PROPORTIONS**



Sample Image Used

**CLARITY CHARACTERISTICS**



**KEY TO SYMBOLS**

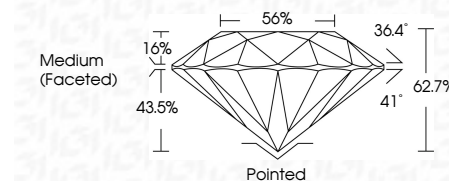
Red symbols indicate internal characteristics.  
Green symbols indicate external characteristics.

**COLOR**

D - F	G - J	K - M	N - R	S - Z	FANCY
Colorless	Near Colorless	Slightly Tinted	Very Light Color	Light Color	

**CLARITY**

FL	IF	VVS 1-2	VS 1-2	SI 1-2	I 1-3
Flawless	Internally Flawless	Very Very Slightly Included	Very Slightly Included	Slightly Included	Included



**ADDITIONAL GRADING INFORMATION**

Polish **EXCELLENT**  
Symmetry **EXCELLENT**  
Fluorescence **NONE**  
Inscription(s) **770689938**



**IGI**



February 9, 2026  
IGI Report No 770689938  
**ROUND BRILLIANT**  
6.63 - 6.74 X 4.17 MM  
Carat Weight **1.13 CARAT**  
Color Grade **H**  
Clarity Grade **VVS 1**  
Depth **EXCELLENT**  
Table **62.7%**  
Girdle **56%**  
Medium (Faceted)  
Culet **Pointed**  
Polish **EXCELLENT**  
Symmetry **EXCELLENT**  
Fluorescence **NONE**  
Inscriptions(s) **770689938**