



ELECTRONIC COPY

770664099
Report verification at igi.org

DIAMOND REPORT

February 10, 2026
IGI Report Number **770664099**
Description **NATURAL DIAMOND**
Shape and Cutting Style **EMERALD CUT**
Measurements **8.26 X 5.78 X 4.09 MM**

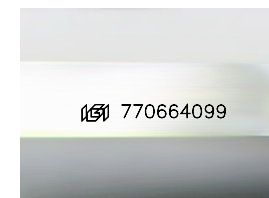
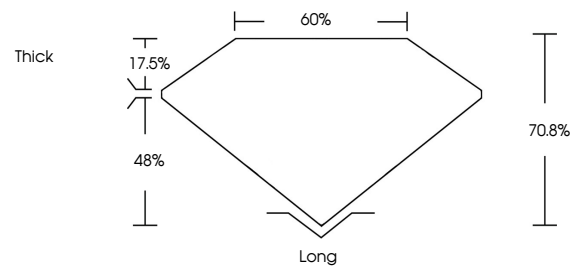
GRADING RESULTS

Carat Weight **2.00 CARATS**
Color Grade **K**
Clarity Grade **VS 1**
Cut Grade **VERY GOOD**

ADDITIONAL GRADING INFORMATION

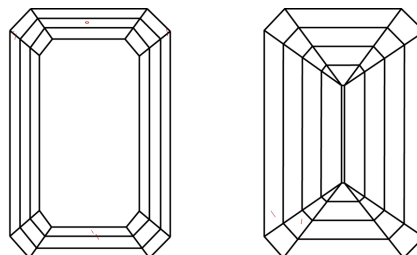
Polish **EXCELLENT**
Symmetry **EXCELLENT**
Fluorescence **NONE**
Inscription(s) **770664099**

PROPORTIONS



Sample Image Used

CLARITY CHARACTERISTICS



KEY TO SYMBOLS

Red symbols indicate internal characteristics.
Green symbols indicate external characteristics.

COLOR

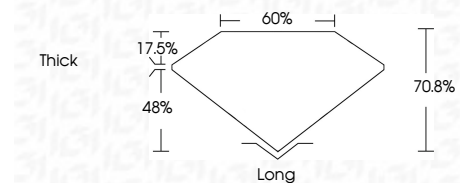
D - F	G - J	K - M	N - R	S - Z	FANCY
Colorless	Near Colorless	Slightly Tinted	Very Light Color	Light Color	

CLARITY

FL	IF	VVS 1-2	VS 1-2	SI 1-2	I 1-3
Flawless	Internally Flawless	Very Very Slightly Included	Very Slightly Included	Slightly Included	Included



February 10, 2026
IGI Report Number **770664099**
Description **NATURAL DIAMOND**
Shape and Cutting Style **EMERALD CUT**
Measurements **8.26 X 5.78 X 4.09 MM**
GRADING RESULTS
Carat Weight **2.00 CARATS**
Color Grade **K**
Clarity Grade **VS 1**
Cut Grade **VERY GOOD**



ADDITIONAL GRADING INFORMATION

Polish **EXCELLENT**
Symmetry **EXCELLENT**
Fluorescence **NONE**
Inscription(s) **770664099**



IGI



February 10, 2026
IGI Report No 770664099
EMERALD CUT
2.00 CARATS
K
VS 1
VERY GOOD
8.26 X 5.78 X 4.09 MM
70.8%
60%
Thick
Long
EXCELLENT
EXCELLENT
NONE
NONE
770664099