



ELECTRONIC COPY

770657125
Report verification at igi.org



March 4, 2026
IGI Report Number **770657125**
Description **NATURAL DIAMOND**
Shape and Cutting Style **PRINCESS CUT**
Measurements **5.33 X 5.31 X 3.81 MM**
GRADING RESULTS
Carat Weight **1.01 CARAT**
Color Grade **J**
Clarity Grade **VS 2**
Cut Grade **VERY GOOD**

DIAMOND REPORT

March 4, 2026
IGI Report Number **770657125**
Description **NATURAL DIAMOND**
Shape and Cutting Style **PRINCESS CUT**
Measurements **5.33 X 5.31 X 3.81 MM**

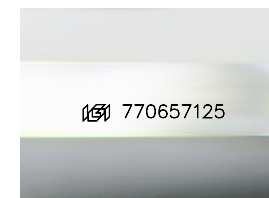
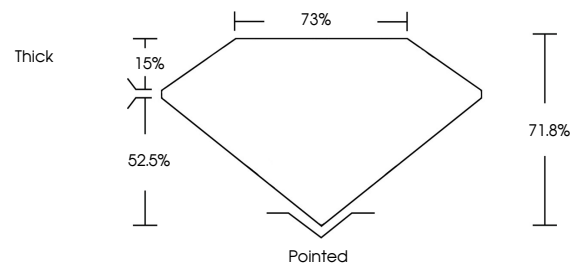
GRADING RESULTS

Carat Weight **1.01 CARAT**
Color Grade **J**
Clarity Grade **VS 2**
Cut Grade **VERY GOOD**

ADDITIONAL GRADING INFORMATION

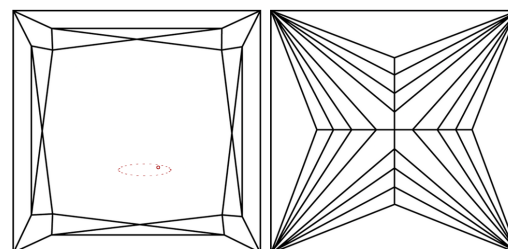
Polish **EXCELLENT**
Symmetry **EXCELLENT**
Fluorescence **NONE**
Inscription(s) **770657125**

PROPORTIONS



Sample Image Used

CLARITY CHARACTERISTICS



KEY TO SYMBOLS

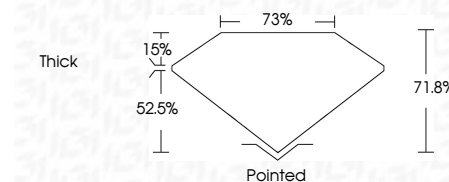
Red symbols indicate internal characteristics.
Green symbols indicate external characteristics.

COLOR

D - F	G - J	K - M	N - R	S - Z	FANCY
Colorless	Near Colorless	Slightly Tinted	Very Light Color	Light Color	

CLARITY

FL	IF	VVS ¹⁻²	VS ¹⁻²	SI ¹⁻²	I ¹⁻³
Flawless	Internally Flawless	Very Very Slightly Included	Very Slightly Included	Slightly Included	Included



ADDITIONAL GRADING INFORMATION

Polish **EXCELLENT**
Symmetry **EXCELLENT**
Fluorescence **NONE**
Inscription(s) **770657125**



IGI



March 4, 2026
IGI Report No 770657125
PRINCESS CUT
5.33 X 5.31 X 3.81 MM
1.01 CARAT
J
VS 2
VERY GOOD
71.8%
73%
Thick
Pointed
EXCELLENT
EXCELLENT
NONE
770657125