



ELECTRONIC COPY

770657120
Report verification at igi.org

DIAMOND REPORT

March 2, 2026
IGI Report Number **770657120**
Description **NATURAL DIAMOND**
Shape and Cutting Style **SQUARE EMERALD CUT**
Measurements **5.26 X 5.26 X 3.80 MM**

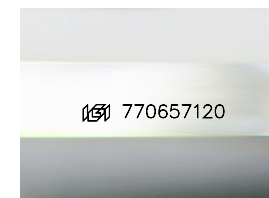
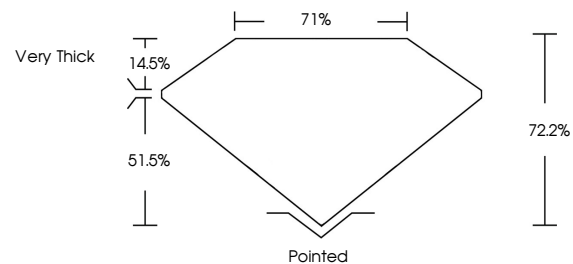
GRADING RESULTS

Carat Weight **1.00 CARAT**
Color Grade **I**
Clarity Grade **VVS 1**
Cut Grade **VERY GOOD**

ADDITIONAL GRADING INFORMATION

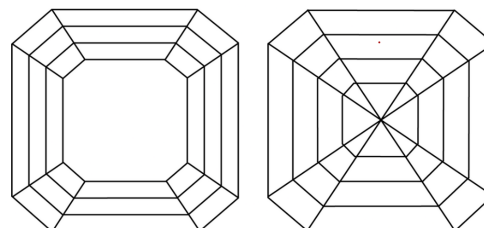
Polish **EXCELLENT**
Symmetry **EXCELLENT**
Fluorescence **NONE**
Inscription(s) **770657120**

PROPORTIONS



Sample Image Used

CLARITY CHARACTERISTICS



KEY TO SYMBOLS

Red symbols indicate internal characteristics.
Green symbols indicate external characteristics.

COLOR

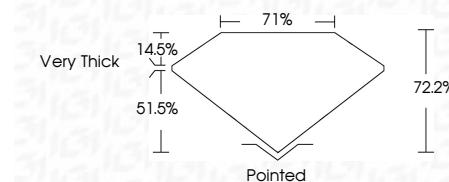
D - F	G - J	K - M	N - R	S - Z	FANCY
Colorless	Near Colorless	Slightly Tinted	Very Light Color	Light Color	

CLARITY

FL	IF	VVS 1-2	VS 1-2	SI 1-2	I 1-3
Flawless	Internally Flawless	Very Very Slightly Included	Very Slightly Included	Slightly Included	Included



March 2, 2026
IGI Report Number **770657120**
Description **NATURAL DIAMOND**
Shape and Cutting Style **SQUARE EMERALD CUT**
Measurements **5.26 X 5.26 X 3.80 MM**
GRADING RESULTS
Carat Weight **1.00 CARAT**
Color Grade **I**
Clarity Grade **VVS 1**
Cut Grade **VERY GOOD**



ADDITIONAL GRADING INFORMATION

Polish **EXCELLENT**
Symmetry **EXCELLENT**
Fluorescence **NONE**
Inscription(s) **770657120**



IGI



March 2, 2026
IGI Report No 770657120
SQUARE EMERALD CUT
5.26 X 5.26 X 3.80 MM
1.00 CARAT
Color Grade **I**
Clarity Grade **VVS 1**
Cut Grade **VERY GOOD**
Depth **72.2%**
Table **71%**
Girdle **Very Thick**
Culet **Pointed**
Polish **EXCELLENT**
Symmetry **EXCELLENT**
Fluorescence **NONE**
Inscriptions(s) **770657120**