



**ELECTRONIC COPY**

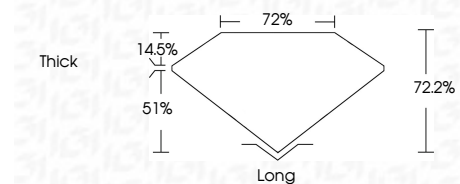
770656987  
Report verification at [igi.org](http://igi.org)



March 6, 2026  
IGI Report Number **770656987**  
Description **NATURAL DIAMOND**  
Shape and Cutting Style **EMERALD CUT**  
Measurements **7.72 X 5.57 X 4.02 MM**

**GRADING RESULTS**

Carat Weight **1.81 CARAT**  
Color Grade **K**  
Clarity Grade **VVS 1**  
Cut Grade **VERY GOOD**



**ADDITIONAL GRADING INFORMATION**

Polish **EXCELLENT**  
Symmetry **EXCELLENT**  
Fluorescence **VERY SLIGHT**  
Inscription(s) **IGI 770656987**



**IGI**

March 6, 2026  
IGI Report No 770656987  
**EMERALD CUT**  
1.81 CARAT **K**  
7.72 X 5.57 X 4.02 MM  
Color Grade **VVS 1**  
Clarity Grade **VERY GOOD**  
Depth **72.2%**  
Table **72%**  
Girdle **Thick**  
Culet **Long**  
Polish **EXCELLENT**  
Symmetry **EXCELLENT**  
Fluorescence **VERY SLIGHT**  
Inscriptions(s) **IGI 770656987**

**DIAMOND REPORT**

March 6, 2026  
IGI Report Number **770656987**  
Description **NATURAL DIAMOND**  
Shape and Cutting Style **EMERALD CUT**  
Measurements **7.72 X 5.57 X 4.02 MM**

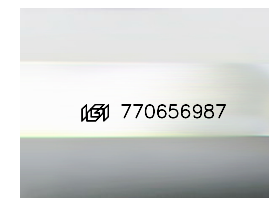
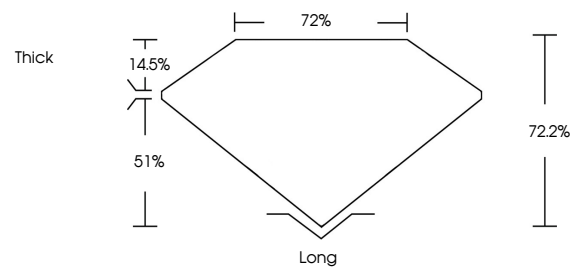
**GRADING RESULTS**

Carat Weight **1.81 CARAT**  
Color Grade **K**  
Clarity Grade **VVS 1**  
Cut Grade **VERY GOOD**

**ADDITIONAL GRADING INFORMATION**

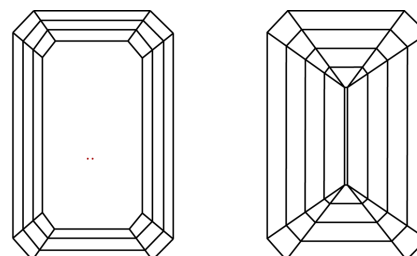
Polish **EXCELLENT**  
Symmetry **EXCELLENT**  
Fluorescence **VERY SLIGHT**  
Inscription(s) **IGI 770656987**

**PROPORTIONS**



Sample Image Used

**CLARITY CHARACTERISTICS**



**KEY TO SYMBOLS**

Red symbols indicate internal characteristics.  
Green symbols indicate external characteristics.

**COLOR**

D - F	G - J	K - M	N - R	S - Z	FANCY
Colorless	Near Colorless	Slightly Tinted	Very Light Color	Light Color	

**CLARITY**

FL	IF	VVS 1-2	VS 1-2	SI 1-2	I 1-3
Flawless	Internally Flawless	Very Very Slightly Included	Very Slightly Included	Slightly Included	Included

