



**ELECTRONIC COPY**

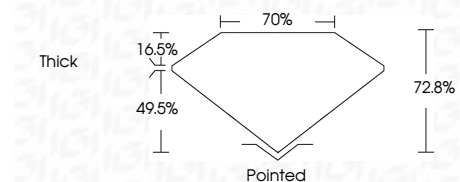
770656783  
Report verification at [igi.org](http://igi.org)



February 25, 2026  
IGI Report Number **770656783**  
Description **NATURAL DIAMOND**  
Shape and Cutting Style **SQUARE EMERALD CUT**  
Measurements **5.33 X 5.15 X 3.75 MM**

**GRADING RESULTS**

Carat Weight **1.01 CARAT**  
Color Grade **I**  
Clarity Grade **VVS 2**  
Cut Grade **VERY GOOD**



**ADDITIONAL GRADING INFORMATION**

Polish **EXCELLENT**  
Symmetry **EXCELLENT**  
Fluorescence **VERY SLIGHT**  
Inscription(s) **IGI 770656783**



February 25, 2026  
IGI Report No 770656783  
**SQUARE EMERALD CUT**  
5.33 X 5.15 X 3.75 MM  
1.01 CARAT  
I  
VVS 2  
VERY GOOD  
72.8%  
70%  
Thick  
Pointed  
EXCELLENT  
EXCELLENT  
VERY SLIGHT  
IGI 770656783

Cutler  
Polish  
Symmetry  
Fluorescence  
Inscription(s)

**DIAMOND REPORT**

February 25, 2026  
IGI Report Number **770656783**  
Description **NATURAL DIAMOND**  
Shape and Cutting Style **SQUARE EMERALD CUT**  
Measurements **5.33 X 5.15 X 3.75 MM**

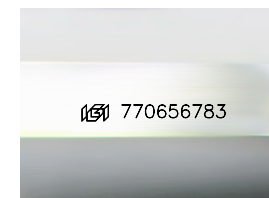
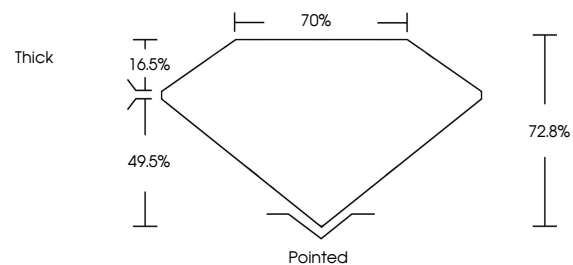
**GRADING RESULTS**

Carat Weight **1.01 CARAT**  
Color Grade **I**  
Clarity Grade **VVS 2**  
Cut Grade **VERY GOOD**

**ADDITIONAL GRADING INFORMATION**

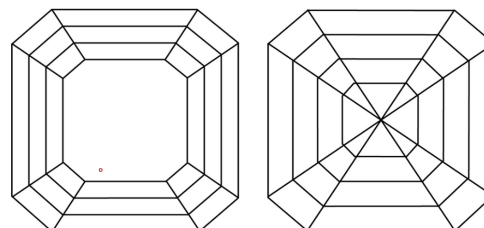
Polish **EXCELLENT**  
Symmetry **EXCELLENT**  
Fluorescence **VERY SLIGHT**  
Inscription(s) **IGI 770656783**

**PROPORTIONS**



Sample Image Used

**CLARITY CHARACTERISTICS**



**KEY TO SYMBOLS**

Red symbols indicate internal characteristics.  
Green symbols indicate external characteristics.

**COLOR**

D - F	G - J	K - M	N - R	S - Z	FANCY
Colorless	Near Colorless	Slightly Tinted	Very Light Color	Light Color	

**CLARITY**

FL	IF	VVS 1-2	VS 1-2	SI 1-2	I 1-3
Flawless	Internally Flawless	Very Very Slightly Included	Very Slightly Included	Slightly Included	Included

