



ELECTRONIC COPY

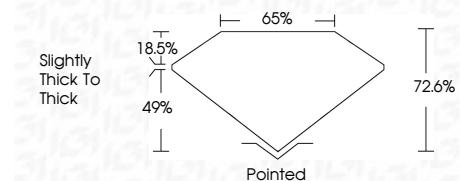
770656629
Report verification at igi.org



February 17, 2026
IGI Report Number **770656629**
Description **NATURAL DIAMOND**
Shape and Cutting Style **SQUARE EMERALD CUT**
Measurements **5.36 X 5.21 X 3.78 MM**

GRADING RESULTS

Carat Weight **1.00 CARAT**
Color Grade **K**
Clarity Grade **INTERNALLY FLAWLESS**
Cut Grade **VERY GOOD**



ADDITIONAL GRADING INFORMATION

Polish **EXCELLENT**
Symmetry **EXCELLENT**
Fluorescence **NONE**
Inscription(s) **IGI 770656629**

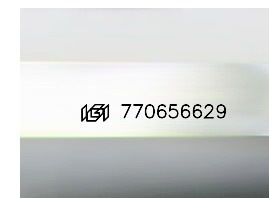
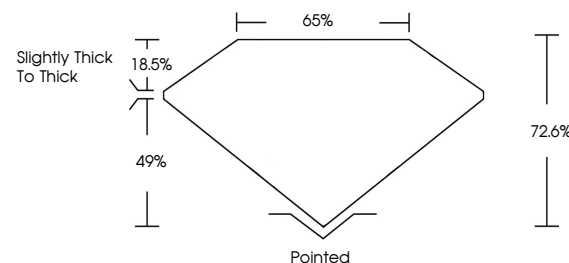


IGI



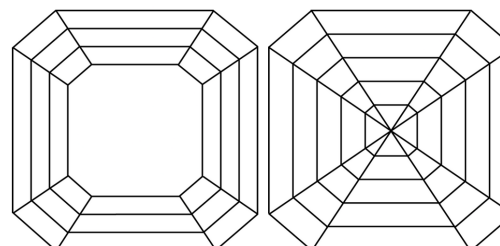
February 17, 2026
IGI Report No 770656629
SQUARE EMERALD CUT
5.36 X 5.21 X 3.78 MM
1.00 CARAT
K
1.00 CARAT
K
VERY GOOD
72.6%
65%
Pointed
EXCELLENT
EXCELLENT
NONE
IGI 770656629

PROPORTIONS



Sample Image Used

CLARITY CHARACTERISTICS



KEY TO SYMBOLS

Red symbols indicate internal characteristics.
Green symbols indicate external characteristics.

COLOR

D - F	G - J	K - M	N - R	S - Z	FANCY
Colorless	Near Colorless	Slightly Tinted	Very Light Color	Light Color	

CLARITY

FL	IF	VVS ¹⁻²	VS ¹⁻²	SI ¹⁻²	I ¹⁻³
Flawless	Internally Flawless	Very Very Slightly Included	Very Slightly Included	Slightly Included	Included

February 17, 2026
IGI Report Number **770656629**
Description **NATURAL DIAMOND**
Shape and Cutting Style **SQUARE EMERALD CUT**
Measurements **5.36 X 5.21 X 3.78 MM**

GRADING RESULTS

Carat Weight **1.00 CARAT**
Color Grade **K**
Clarity Grade **INTERNALLY FLAWLESS**
Cut Grade **VERY GOOD**

ADDITIONAL GRADING INFORMATION

Polish **EXCELLENT**
Symmetry **EXCELLENT**
Fluorescence **NONE**
Inscription(s) **IGI 770656629**