



**ELECTRONIC COPY**

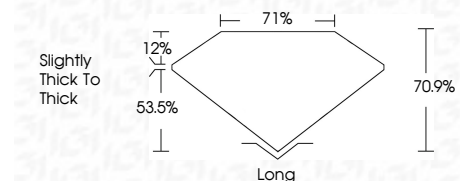
770656623  
Report verification at [igi.org](http://igi.org)



February 17, 2026  
IGI Report Number **770656623**  
Description **NATURAL DIAMOND**  
Shape and Cutting Style **EMERALD CUT**  
Measurements **6.96 X 5.02 X 3.56 MM**

**GRADING RESULTS**

Carat Weight **1.21 CARAT**  
Color Grade **H**  
Clarity Grade **VVS 2**  
Cut Grade **VERY GOOD**



**ADDITIONAL GRADING INFORMATION**

Polish **EXCELLENT**  
Symmetry **EXCELLENT**  
Fluorescence **NONE**  
Inscription(s) **IGI 770656623**



**IGI**

February 17, 2026  
IGI Report No 770656623  
**EMERALD CUT**  
6.96 X 5.02 X 3.56 MM  
Carat Weight **1.21 CARAT**  
Color Grade **H**  
Clarity Grade **VVS 2**  
Cut Grade **VERY GOOD**  
Depth **70.9%**  
Table **12%**  
Girdle **71%**  
Slightly thick to thick  
Long **EXCELLENT**  
Polish **EXCELLENT**  
Symmetry **EXCELLENT**  
Fluorescence **NONE**  
Inscriptions(s) **IGI 770656623**

**DIAMOND REPORT**

February 17, 2026  
IGI Report Number **770656623**  
Description **NATURAL DIAMOND**  
Shape and Cutting Style **EMERALD CUT**  
Measurements **6.96 X 5.02 X 3.56 MM**

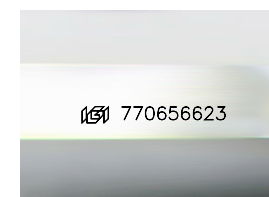
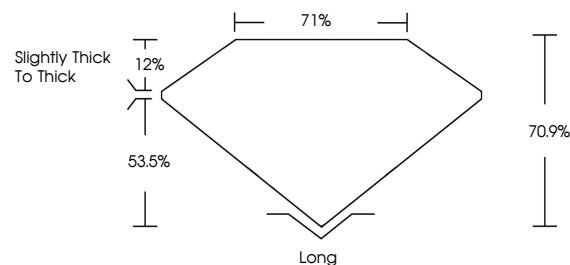
**GRADING RESULTS**

Carat Weight **1.21 CARAT**  
Color Grade **H**  
Clarity Grade **VVS 2**  
Cut Grade **VERY GOOD**

**ADDITIONAL GRADING INFORMATION**

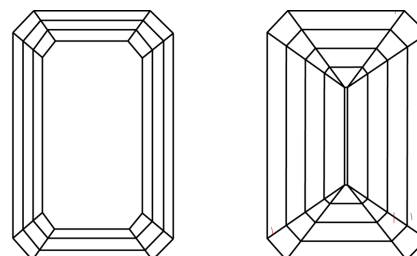
Polish **EXCELLENT**  
Symmetry **EXCELLENT**  
Fluorescence **NONE**  
Inscription(s) **IGI 770656623**

**PROPORTIONS**



Sample Image Used

**CLARITY CHARACTERISTICS**



**KEY TO SYMBOLS**

Red symbols indicate internal characteristics.  
Green symbols indicate external characteristics.

**COLOR**

D - F	G - J	K - M	N - R	S - Z	FANCY
Colorless	Near Colorless	Slightly Tinted	Very Light Color	Light Color	

**CLARITY**

FL	IF	VVS 1-2	VS 1-2	SI 1-2	I 1-3
Flawless	Internally Flawless	Very Very Slightly Included	Very Slightly Included	Slightly Included	Included

