



**ELECTRONIC COPY**

770656556  
Report verification at [igi.org](http://igi.org)



February 11, 2026

IGI Report Number **770656556**

Description **NATURAL DIAMOND**

Shape and Cutting Style **EMERALD CUT**

Measurements **7.29 X 5.11 X 3.50 MM**

**GRADING RESULTS**

Carat Weight **1.31 CARAT**

Color Grade **K**

Clarity Grade **VVS 2**

Cut Grade **VERY GOOD**

**DIAMOND REPORT**

February 11, 2026

IGI Report Number **770656556**

Description **NATURAL DIAMOND**

Shape and Cutting Style **EMERALD CUT**

Measurements **7.29 X 5.11 X 3.50 MM**

**GRADING RESULTS**

Carat Weight **1.31 CARAT**

Color Grade **K**

Clarity Grade **VVS 2**

Cut Grade **VERY GOOD**

**ADDITIONAL GRADING INFORMATION**

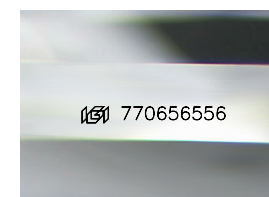
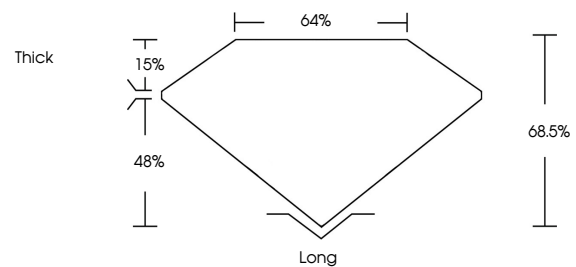
Polish **EXCELLENT**

Symmetry **EXCELLENT**

Fluorescence **NONE**

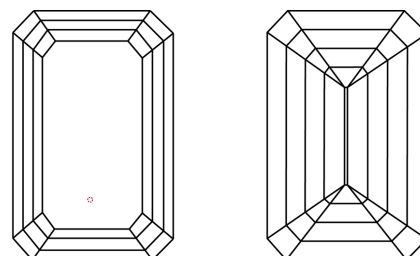
Inscription(s) **770656556**

**PROPORTIONS**



Sample Image Used

**CLARITY CHARACTERISTICS**



**KEY TO SYMBOLS**

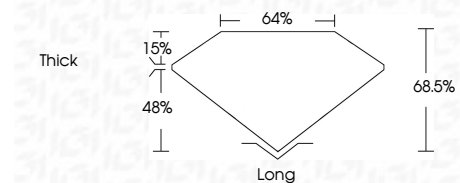
Red symbols indicate internal characteristics.  
Green symbols indicate external characteristics.

**COLOR**

D - F	G - J	K - M	N - R	S - Z	FANCY
Colorless	Near Colorless	Slightly Tinted	Very Light Color	Light Color	

**CLARITY**

FL	IF	VVS <sup>1-2</sup>	VS <sup>1-2</sup>	SI <sup>1-2</sup>	I <sup>1-3</sup>
Flawless	Internally Flawless	Very Very Slightly Included	Very Slightly Included	Slightly Included	Included



**ADDITIONAL GRADING INFORMATION**

Polish **EXCELLENT**

Symmetry **EXCELLENT**

Fluorescence **NONE**

Inscription(s) **770656556**



**IGI**



February 11, 2026	1.31 CARAT	K	VVS 2	68.5%	64%	Thick	Long
IGI Report No 770656556	EXCELLENT	EXCELLENT	VERY GOOD	EXCELLENT	EXCELLENT	NONE	NONE
EMERALD CUT	7.29 X 5.11 X 3.50 MM						770656556
Color Grade	Color Grade	Clarity Grade	Cut Grade	Depth	Table	Girdle	Culet
Polish	Symmetry	Fluorescence	Inscription(s)				