



**ELECTRONIC COPY**

770656552  
Report verification at [igi.org](http://igi.org)

**DIAMOND REPORT**

February 11, 2026  
IGI Report Number **770656552**  
Description **NATURAL DIAMOND**  
Shape and Cutting Style **SQUARE EMERALD CUT**  
Measurements **5.30 X 5.24 X 3.75 MM**

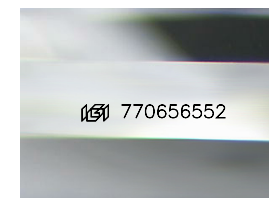
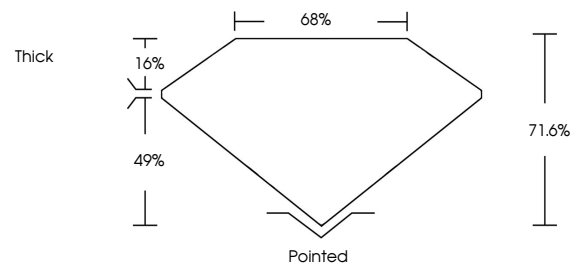
**GRADING RESULTS**

Carat Weight **1.00 CARAT**  
Color Grade **K**  
Clarity Grade **VVS 2**  
Cut Grade **VERY GOOD**

**ADDITIONAL GRADING INFORMATION**

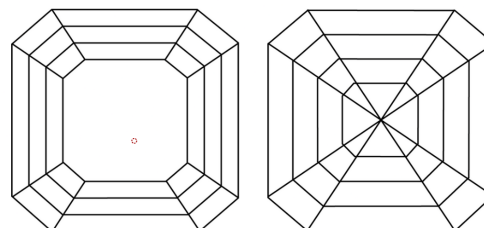
Polish **EXCELLENT**  
Symmetry **EXCELLENT**  
Fluorescence **NONE**  
Inscription(s) **770656552**

**PROPORTIONS**



Sample Image Used

**CLARITY CHARACTERISTICS**



**KEY TO SYMBOLS**

Red symbols indicate internal characteristics.  
Green symbols indicate external characteristics.

**COLOR**

D - F	G - J	K - M	N - R	S - Z	FANCY
Colorless	Near Colorless	Slightly Tinted	Very Light Color	Light Color	

**CLARITY**

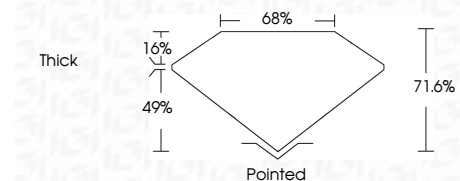
FL	IF	VVS <sup>1-2</sup>	VS <sup>1-2</sup>	SI <sup>1-2</sup>	I <sup>1-3</sup>
Flawless	Internally Flawless	Very Very Slightly Included	Very Slightly Included	Slightly Included	Included



February 11, 2026  
IGI Report Number **770656552**  
Description **NATURAL DIAMOND**  
Shape and Cutting Style **SQUARE EMERALD CUT**  
Measurements **5.30 X 5.24 X 3.75 MM**

**GRADING RESULTS**

Carat Weight **1.00 CARAT**  
Color Grade **K**  
Clarity Grade **VVS 2**  
Cut Grade **VERY GOOD**



**ADDITIONAL GRADING INFORMATION**

Polish **EXCELLENT**  
Symmetry **EXCELLENT**  
Fluorescence **NONE**  
Inscription(s) **770656552**



**IGI**



February 11, 2026  
IGI Report No 770656552  
SQUARE EMERALD CUT

5.30 X 5.24 X 3.75 MM

1.00 CARAT  
K

VVS 2  
VERY GOOD

71.6%  
68%  
Thick

Pointed  
EXCELLENT  
EXCELLENT  
NONE  
NONE

770656552

Color Grade  
Clarity Grade  
Depth  
Table  
Girdle

Culet  
Polish  
Symmetry  
Fluorescence  
Inscriptions(s)