



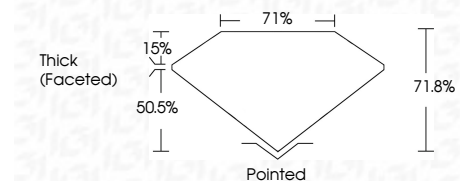
**ELECTRONIC COPY**

770656483  
Report verification at igi.org



February 11, 2026  
IGI Report Number **770656483**  
Description **NATURAL DIAMOND**  
Shape and Cutting Style **SQUARE EMERALD CUT**  
Measurements **5.37 X 5.21 X 3.74 MM**

**GRADING RESULTS**  
Carat Weight **1.02 CARAT**  
Color Grade **K**  
Clarity Grade **VS 1**  
Cut Grade **VERY GOOD**



**ADDITIONAL GRADING INFORMATION**  
Polish **EXCELLENT**  
Symmetry **EXCELLENT**  
Fluorescence **NONE**  
Inscription(s) **IGI 770656483**



February 11, 2026  
IGI Report No 770656483  
**SQUARE EMERALD CUT**  
1.02 CARAT **K**  
Carat Weight  
Color Grade  
Clarity Grade  
Depth  
Table  
Girdle  
Cutler  
Polish  
Symmetry  
Fluorescence  
Inscriptions(s)  
**VERY GOOD**  
71.05%  
71%  
Pointed  
**EXCELLENT**  
**EXCELLENT**  
**NONE**  
IGI 770656483

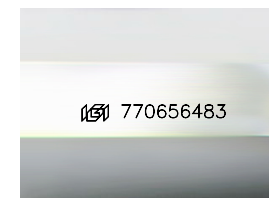
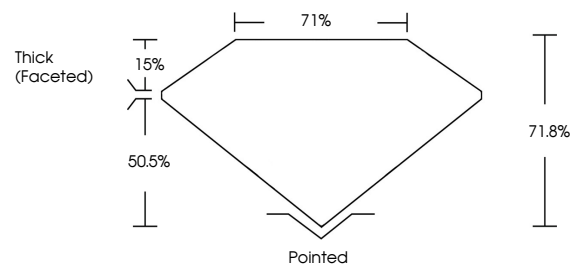
**DIAMOND REPORT**

February 11, 2026  
IGI Report Number **770656483**  
Description **NATURAL DIAMOND**  
Shape and Cutting Style **SQUARE EMERALD CUT**  
Measurements **5.37 X 5.21 X 3.74 MM**

**GRADING RESULTS**  
Carat Weight **1.02 CARAT**  
Color Grade **K**  
Clarity Grade **VS 1**  
Cut Grade **VERY GOOD**

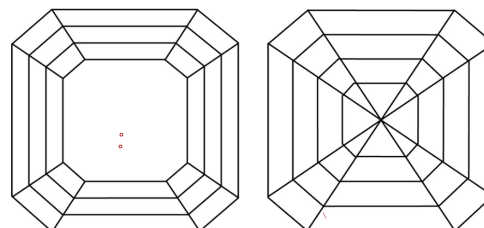
**ADDITIONAL GRADING INFORMATION**  
Polish **EXCELLENT**  
Symmetry **EXCELLENT**  
Fluorescence **NONE**  
Inscription(s) **IGI 770656483**

**PROPORTIONS**



Sample Image Used

**CLARITY CHARACTERISTICS**



**KEY TO SYMBOLS**

Red symbols indicate internal characteristics.  
Green symbols indicate external characteristics.

**COLOR**

D - F	G - J	K - M	N - R	S - Z	FANCY
Colorless	Near Colorless	Slightly Tinted	Very Light Color	Light Color	

**CLARITY**

FL	IF	VVS 1-2	VS 1-2	SI 1-2	I 1-3
Flawless	Internally Flawless	Very Very Slightly Included	Very Slightly Included	Slightly Included	Included

