



ELECTRONIC COPY

770656452
Report verification at igi.org



February 9, 2026

IGI Report Number **770656452**

Description **NATURAL DIAMOND**

Shape and Cutting Style **EMERALD CUT**

Measurements **7.03 X 4.99 X 3.45 MM**

GRADING RESULTS

Carat Weight **1.22 CARAT**

Color Grade **J**

Clarity Grade **VS 2**

Cut Grade **VERY GOOD**

DIAMOND REPORT

February 9, 2026

IGI Report Number **770656452**

Description **NATURAL DIAMOND**

Shape and Cutting Style **EMERALD CUT**

Measurements **7.03 X 4.99 X 3.45 MM**

GRADING RESULTS

Carat Weight **1.22 CARAT**

Color Grade **J**

Clarity Grade **VS 2**

Cut Grade **VERY GOOD**

ADDITIONAL GRADING INFORMATION

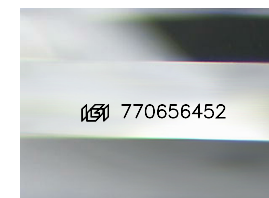
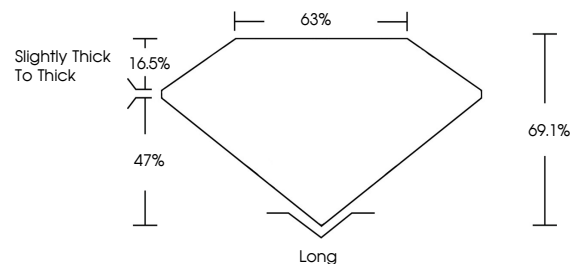
Polish **EXCELLENT**

Symmetry **EXCELLENT**

Fluorescence **VERY SLIGHT**

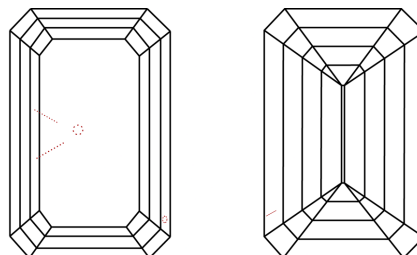
Inscription(s) 770656452

PROPORTIONS



Sample Image Used

CLARITY CHARACTERISTICS



KEY TO SYMBOLS

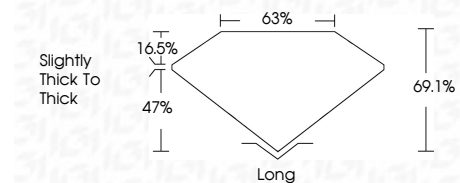
Red symbols indicate internal characteristics.
Green symbols indicate external characteristics.

COLOR

D - F	G - J	K - M	N - R	S - Z	FANCY
Colorless	Near Colorless	Slightly Tinted	Very Light Color	Light Color	

CLARITY

FL	IF	VVS ¹⁻²	VS ¹⁻²	SI ¹⁻²	I ¹⁻³
Flawless	Internally Flawless	Very Very Slightly Included	Very Slightly Included	Slightly Included	Included



ADDITIONAL GRADING INFORMATION

Polish **EXCELLENT**

Symmetry **EXCELLENT**

Fluorescence **VERY SLIGHT**

Inscription(s) 770656452



IGI



February 9, 2026	IGI Report No 770656452	EMERALD CUT	1.22 CARAT	J	VS 2	VERY GOOD	69.1%	63%	Slightly thick to thick	Long	EXCELLENT	EXCELLENT	VERY SLIGHT	770656452
Carat Weight	Color Grade	Clarity Grade	Depth	Table	Girdle	Culet	Polish	Symmetry	Fluorescence	Inscription(s)				