



**ELECTRONIC COPY**

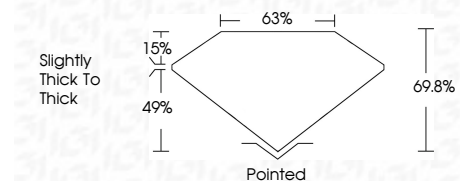
770656392  
Report verification at [igi.org](http://igi.org)



February 9, 2026  
IGI Report Number **770656392**  
Description **NATURAL DIAMOND**  
Shape and Cutting Style **SQUARE EMERALD CUT**  
Measurements **5.46 X 5.33 X 3.72 MM**

**GRADING RESULTS**

Carat Weight **1.02 CARAT**  
Color Grade **I**  
Clarity Grade **VS 1**  
Cut Grade **VERY GOOD**



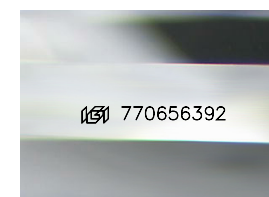
**ADDITIONAL GRADING INFORMATION**

Polish **EXCELLENT**  
Symmetry **EXCELLENT**  
Fluorescence **NONE**  
Inscription(s) **IGI 770656392**



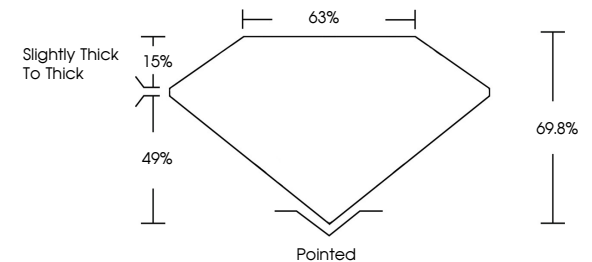
**IGI**

February 9, 2026  
IGI Report No 770656392  
**SQUARE EMERALD CUT**  
5.46 X 5.33 X 3.72 MM  
1.02 CARAT  
Color Grade **I**  
Clarity Grade **VS 1**  
Depth **69.8%**  
Table **68%**  
Girdle **Slightly thick to thick**  
Culet **Pointed**  
Polish **EXCELLENT**  
Symmetry **EXCELLENT**  
Fluorescence **NONE**  
Inscriptions(s) **IGI 770656392**

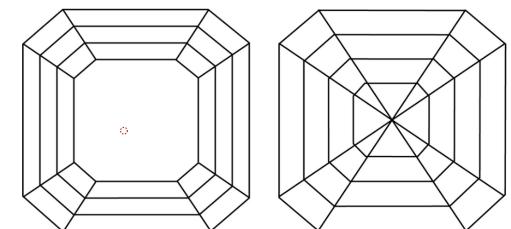


Sample Image Used

**PROPORTIONS**



**CLARITY CHARACTERISTICS**



**KEY TO SYMBOLS**

Red symbols indicate internal characteristics.  
Green symbols indicate external characteristics.

**COLOR**

D - F	G - J	K - M	N - R	S - Z	FANCY
Colorless	Near Colorless	Slightly Tinted	Very Light Color	Light Color	

**CLARITY**

FL	IF	VVS <sup>1-2</sup>	VS <sup>1-2</sup>	SI <sup>1-2</sup>	I <sup>1-3</sup>
Flawless	Internally Flawless	Very Very Slightly Included	Very Slightly Included	Slightly Included	Included



February 9, 2026  
IGI Report Number **770656392**  
Description **NATURAL DIAMOND**  
Shape and Cutting Style **SQUARE EMERALD CUT**  
Measurements **5.46 X 5.33 X 3.72 MM**  
**GRADING RESULTS**  
Carat Weight **1.02 CARAT**  
Color Grade **I**  
Clarity Grade **VS 1**  
Cut Grade **VERY GOOD**  
**ADDITIONAL GRADING INFORMATION**  
Polish **EXCELLENT**  
Symmetry **EXCELLENT**  
Fluorescence **NONE**  
Inscription(s) **IGI 770656392**