



ELECTRONIC COPY

770656345
Report verification at igi.org



February 10, 2026
IGI Report Number **770656345**
Description **NATURAL DIAMOND**
Shape and Cutting Style **EMERALD CUT**
Measurements **6.33 X 4.62 X 3.39 MM**
GRADING RESULTS
Carat Weight **1.01 CARAT**
Color Grade **I**
Clarity Grade **INTERNALLY FLAWLESS**
Cut Grade **VERY GOOD**

DIAMOND REPORT

February 10, 2026
IGI Report Number **770656345**
Description **NATURAL DIAMOND**
Shape and Cutting Style **EMERALD CUT**
Measurements **6.33 X 4.62 X 3.39 MM**

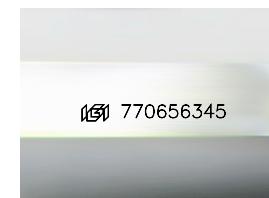
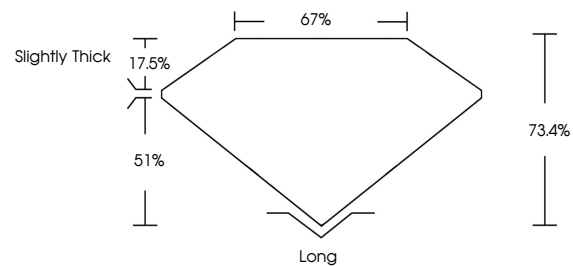
GRADING RESULTS

Carat Weight **1.01 CARAT**
Color Grade **I**
Clarity Grade **INTERNALLY FLAWLESS**
Cut Grade **VERY GOOD**

ADDITIONAL GRADING INFORMATION

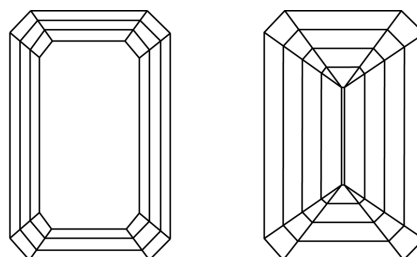
Polish **EXCELLENT**
Symmetry **EXCELLENT**
Fluorescence **NONE**
Inscription(s) **770656345**

PROPORTIONS



Sample Image Used

CLARITY CHARACTERISTICS



KEY TO SYMBOLS

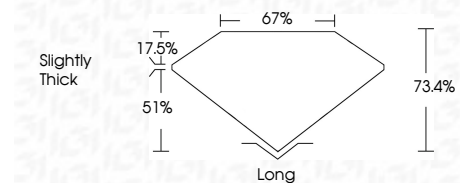
Red symbols indicate internal characteristics.
Green symbols indicate external characteristics.

COLOR

D - F	G - J	K - M	N - R	S - Z	FANCY
Colorless	Near Colorless	Slightly Tinted	Very Light Color	Light Color	

CLARITY

FL	IF	VVS ¹⁻²	VS ¹⁻²	SI ¹⁻²	I ¹⁻³
Flawless	Internally Flawless	Very Very Slightly Included	Very Slightly Included	Slightly Included	Included



ADDITIONAL GRADING INFORMATION

Polish **EXCELLENT**
Symmetry **EXCELLENT**
Fluorescence **NONE**
Inscription(s) **770656345**



IGI



February 10, 2026	IGI Report No 770656345	EMERALD CUT	6.33 X 4.62 X 3.39 MM	1.01 CARAT	I	VERY GOOD	73.4%	67%	Slightly Thick	Long	EXCELLENT	EXCELLENT	NONE	770656345
Color Grade	Clarity Grade	Cut Grade	Table	Depth	Grille	Color	Polish	Symmetry	Fluorescence	Inscription(s)				