



ELECTRONIC COPY

770656257
Report verification at igi.org

DIAMOND REPORT

February 6, 2026
IGI Report Number **770656257**
Description **NATURAL DIAMOND**
Shape and Cutting Style **SQUARE EMERALD CUT**
Measurements **6.22 X 6.05 X 4.26 MM**

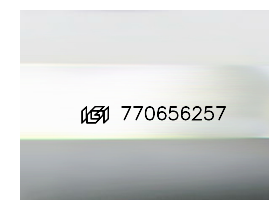
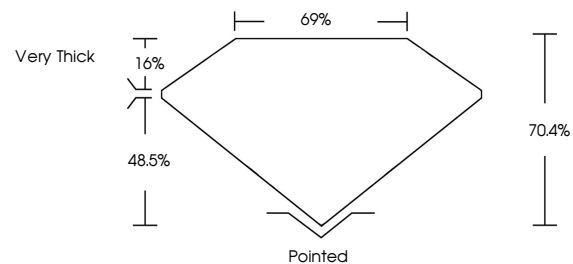
GRADING RESULTS

Carat Weight **1.50 CARAT**
Color Grade **I**
Clarity Grade **VVS 2**
Cut Grade **VERY GOOD**

ADDITIONAL GRADING INFORMATION

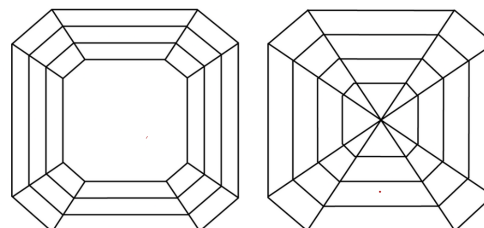
Polish **EXCELLENT**
Symmetry **EXCELLENT**
Fluorescence **VERY SLIGHT**
Inscription(s) **770656257**

PROPORTIONS



Sample Image Used

CLARITY CHARACTERISTICS



KEY TO SYMBOLS

Red symbols indicate internal characteristics.
Green symbols indicate external characteristics.

COLOR

D - F	G - J	K - M	N - R	S - Z	FANCY
Colorless	Near Colorless	Slightly Tinted	Very Light Color	Light Color	

CLARITY

FL	IF	VVS 1-2	VS 1-2	SI 1-2	I 1-3
Flawless	Internally Flawless	Very Very Slightly Included	Very Slightly Included	Slightly Included	Included



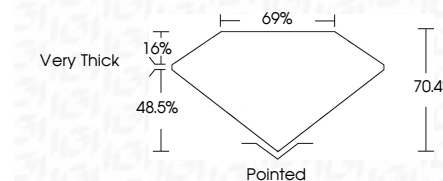
February 6, 2026
IGI Report Number **770656257**
Description **NATURAL DIAMOND**
Shape and Cutting Style **SQUARE EMERALD CUT**
Measurements **6.22 X 6.05 X 4.26 MM**

GRADING RESULTS

Carat Weight **1.50 CARAT**
Color Grade **I**
Clarity Grade **VVS 2**
Cut Grade **VERY GOOD**

ADDITIONAL GRADING INFORMATION

Polish **EXCELLENT**
Symmetry **EXCELLENT**
Fluorescence **VERY SLIGHT**
Inscription(s) **770656257**



IGI

February 6, 2026
IGI Report No 770656257
SQUARE EMERALD CUT

6.22 X 6.05 X 4.26 MM

1.50 CARAT

Color Grade **I**

Clarity Grade **VVS 2**

Cut Grade **VERY GOOD**

Depth **48.5%**

Table **16%**

Crown Angle **69%**

Height **70.4%**

Culet **Pointed**

Polish **EXCELLENT**

Symmetry **EXCELLENT**

Fluorescence **VERY SLIGHT**

Inscription(s) **770656257**