



ELECTRONIC COPY

769652200
Report verification at igi.org

DIAMOND REPORT

February 26, 2026
IGI Report Number **769652200**
Description **NATURAL DIAMOND**
Shape and Cutting Style **EMERALD CUT**
Measurements **8.37 X 5.88 X 4.02 MM**

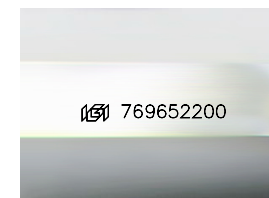
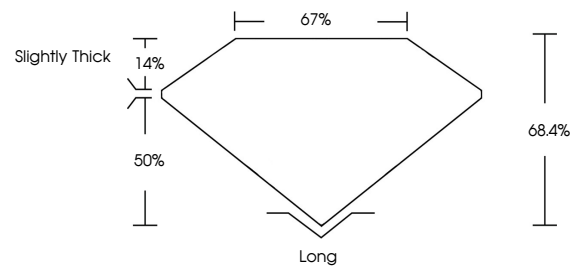
GRADING RESULTS

Carat Weight **2.00 CARATS**
Color Grade **K**
Clarity Grade **VVS 2**
Cut Grade **VERY GOOD**

ADDITIONAL GRADING INFORMATION

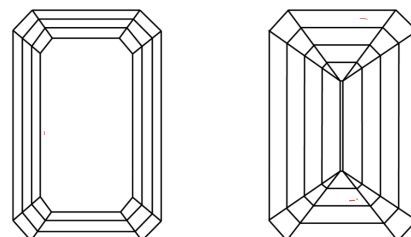
Polish **EXCELLENT**
Symmetry **EXCELLENT**
Fluorescence **NONE**
Inscription(s) **769652200**

PROPORTIONS



Sample Image Used

CLARITY CHARACTERISTICS



KEY TO SYMBOLS

Red symbols indicate internal characteristics.
Green symbols indicate external characteristics.

COLOR

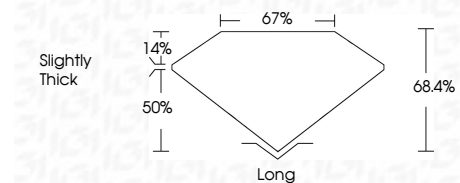
D - F	G - J	K - M	N - R	S - Z	FANCY
Colorless	Near Colorless	Slightly Tinted	Very Light Color	Light Color	

CLARITY

FL	IF	VVS ¹⁻²	VS ¹⁻²	SI ¹⁻²	I ¹⁻³
Flawless	Internally Flawless	Very Very Slightly Included	Very Slightly Included	Slightly Included	Included



February 26, 2026
IGI Report Number **769652200**
Description **NATURAL DIAMOND**
Shape and Cutting Style **EMERALD CUT**
Measurements **8.37 X 5.88 X 4.02 MM**
GRADING RESULTS
Carat Weight **2.00 CARATS**
Color Grade **K**
Clarity Grade **VVS 2**
Cut Grade **VERY GOOD**



ADDITIONAL GRADING INFORMATION

Polish **EXCELLENT**
Symmetry **EXCELLENT**
Fluorescence **NONE**
Inscription(s) **769652200**



IGI



February 26, 2026
IGI Report No. 769652200
EMERALD CUT
8.37 X 5.88 X 4.02 MM
2.00 CARATS
K
VVS 2
VERY GOOD
8.37
68.4%
67%
Slightly Thick
Long
EXCELLENT
EXCELLENT
NONE
 769652200