



**ELECTRONIC COPY**

769651983  
Report verification at [igi.org](http://igi.org)



March 24, 2026  
IGI Report Number **769651983**  
Description **NATURAL DIAMOND**  
Shape and Cutting Style **EMERALD CUT**  
Measurements **7.75 X 5.51 X 3.74 MM**  
**GRADING RESULTS**  
Carat Weight **1.70 CARAT**  
Color Grade **J**  
Clarity Grade **INTERNALLY FLAWLESS**  
Cut Grade **VERY GOOD**

**DIAMOND REPORT**

March 24, 2026  
IGI Report Number **769651983**  
Description **NATURAL DIAMOND**  
Shape and Cutting Style **EMERALD CUT**  
Measurements **7.75 X 5.51 X 3.74 MM**

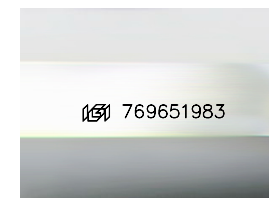
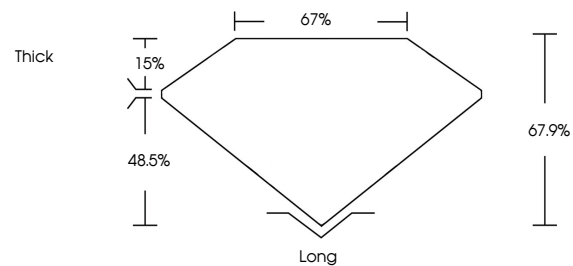
**GRADING RESULTS**

Carat Weight **1.70 CARAT**  
Color Grade **J**  
Clarity Grade **INTERNALLY FLAWLESS**  
Cut Grade **VERY GOOD**

**ADDITIONAL GRADING INFORMATION**

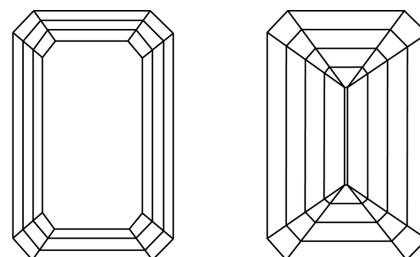
Polish **EXCELLENT**  
Symmetry **EXCELLENT**  
Fluorescence **VERY SLIGHT**  
Inscription(s) **769651983**

**PROPORTIONS**



Sample Image Used

**CLARITY CHARACTERISTICS**



**KEY TO SYMBOLS**

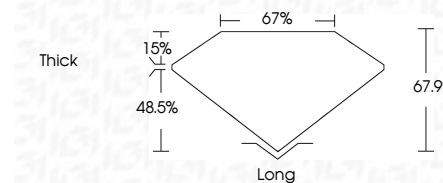
Red symbols indicate internal characteristics.  
Green symbols indicate external characteristics.

**COLOR**

D - F	G - J	K - M	N - R	S - Z	FANCY
Colorless	Near Colorless	Slightly Tinted	Very Light Color	Light Color	

**CLARITY**

FL	IF	VVS <sup>1-2</sup>	VS <sup>1-2</sup>	SI <sup>1-2</sup>	I <sup>1-3</sup>
Flawless	Internally Flawless	Very Very Slightly Included	Very Slightly Included	Slightly Included	Included



**ADDITIONAL GRADING INFORMATION**

Polish **EXCELLENT**  
Symmetry **EXCELLENT**  
Fluorescence **VERY SLIGHT**  
Inscription(s) **769651983**



**IGI**



March 24, 2026  
IGI Report No 769651983  
**EMERALD CUT**  
1.70 CARAT  
Color Grade **J**  
Clarity Grade **IF**  
Depth **67.9%**  
Table **67%**  
Girdle **Thick**  
Long **EXCELLENT**  
Polish **EXCELLENT**  
Symmetry **EXCELLENT**  
Fluorescence **VERY SLIGHT**  
Inscription(s) **769651983**