



ELECTRONIC COPY

769651895
Report verification at igi.org



February 12, 2026

IGI Report Number **769651895**

Description **NATURAL DIAMOND**

Shape and Cutting Style **PRINCESS CUT**

Measurements **5.56 X 5.56 X 4.14 MM**

GRADING RESULTS

Carat Weight **1.20 CARAT**

Color Grade **J**

Clarity Grade **VS 1**

Cut Grade **VERY GOOD**

February 12, 2026

IGI Report Number **769651895**

Description **NATURAL DIAMOND**

Shape and Cutting Style **PRINCESS CUT**

Measurements **5.56 X 5.56 X 4.14 MM**

GRADING RESULTS

Carat Weight **1.20 CARAT**

Color Grade **J**

Clarity Grade **VS 1**

Cut Grade **VERY GOOD**

ADDITIONAL GRADING INFORMATION

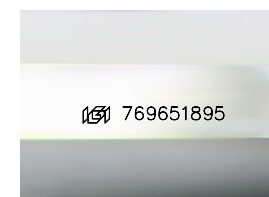
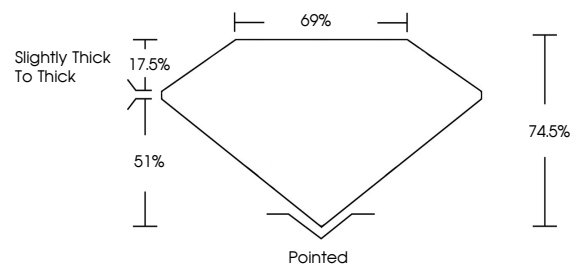
Polish **EXCELLENT**

Symmetry **EXCELLENT**

Fluorescence **NONE**

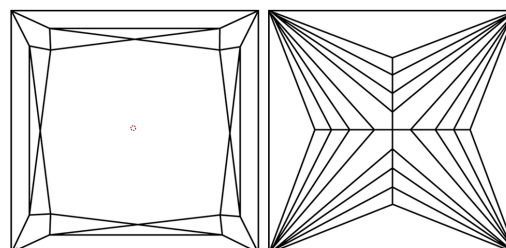
Inscription(s) **769651895**

PROPORTIONS



Sample Image Used

CLARITY CHARACTERISTICS



KEY TO SYMBOLS

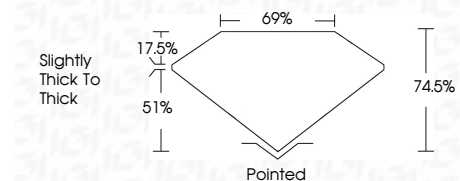
Red symbols indicate internal characteristics.
Green symbols indicate external characteristics.

COLOR

D - F	G - J	K - M	N - R	S - Z	FANCY
Colorless	Near Colorless	Slightly Tinted	Very Light Color	Light Color	

CLARITY

FL	IF	VVS ¹⁻²	VS ¹⁻²	SI ¹⁻²	I ¹⁻³
Flawless	Internally Flawless	Very Very Slightly Included	Very Slightly Included	Slightly Included	Included



ADDITIONAL GRADING INFORMATION

Polish **EXCELLENT**

Symmetry **EXCELLENT**

Fluorescence **NONE**

Inscription(s) **769651895**



IGI



February 12, 2026	IGI Report No 769651895	PRINCESS CUT	1.20 CARAT	J	VS 1	74.5%	69%	Slightly thick to thick	Pointed	EXCELLENT	EXCELLENT	NONE	769651895
5.56 X 5.56 X 4.14 MM	Carat Weight	Color Grade	Clarity Grade	Cut Grade	Depth	Table	Girdle		Culet	Polish	Symmetry	Fluorescence	Inscription(s)