



**ELECTRONIC COPY**

769610925  
Report verification at [igi.org](http://igi.org)



January 31, 2026

IGI Report Number **769610925**

Description **NATURAL DIAMOND**

Shape and Cutting Style **EMERALD CUT**

Measurements **7.58 X 5.25 X 3.35 MM**

**GRADING RESULTS**

Carat Weight **1.37 CARAT**

Color Grade **J**

Clarity Grade **SI 1**

Cut Grade **VERY GOOD**

**DIAMOND REPORT**

January 31, 2026

IGI Report Number **769610925**

Description **NATURAL DIAMOND**

Shape and Cutting Style **EMERALD CUT**

Measurements **7.58 X 5.25 X 3.35 MM**

**GRADING RESULTS**

Carat Weight **1.37 CARAT**

Color Grade **J**

Clarity Grade **SI 1**

Cut Grade **VERY GOOD**

**ADDITIONAL GRADING INFORMATION**

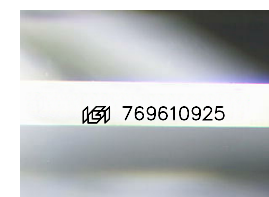
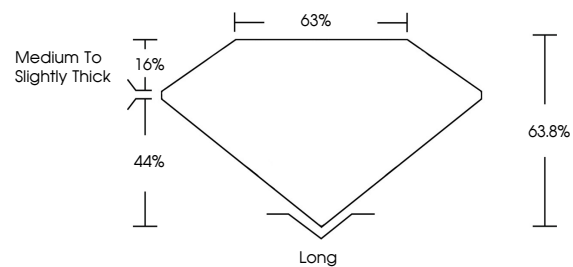
Polish **VERY GOOD**

Symmetry **VERY GOOD**

Fluorescence **STRONG**

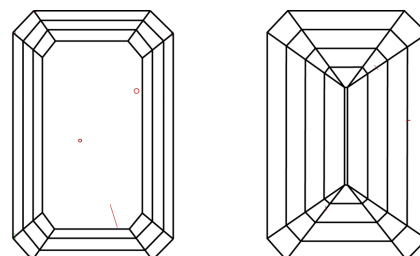
Inscription(s) **769610925**

**PROPORTIONS**



Sample Image Used

**CLARITY CHARACTERISTICS**



**KEY TO SYMBOLS**

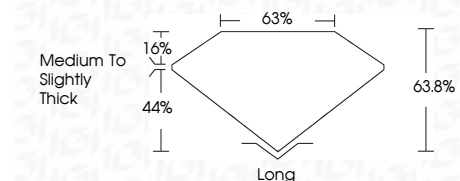
Red symbols indicate internal characteristics.  
Green symbols indicate external characteristics.

**COLOR**

D - F	G - J	K - M	N - R	S - Z	FANCY
Colorless	Near Colorless	Slightly Tinted	Very Light Color	Light Color	

**CLARITY**

FL	IF	VVS <sup>1-2</sup>	VS <sup>1-2</sup>	SI <sup>1-2</sup>	I <sup>1-3</sup>
Flawless	Internally Flawless	Very Very Slightly Included	Very Slightly Included	Slightly Included	Included



**ADDITIONAL GRADING INFORMATION**

Polish **VERY GOOD**

Symmetry **VERY GOOD**

Fluorescence **STRONG**

Inscription(s) **769610925**



**IGI**



January 31, 2026	IGI Report No 769610925	EMERALD CUT	1.37 CARAT	J	SI 1	VERY GOOD	63.8%	63%	Medium To Slightly Thick	Long	VERY GOOD	VERY GOOD	STRONG	769610925
Carat Weight	Color Grade	Clarity Grade	Depth	Table	Cut Grade	Polish	Symmetry	Fluorescence	Inscription(s)					