



**ELECTRONIC COPY**

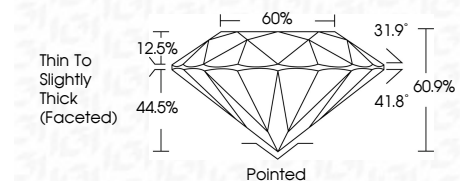
768684309  
Report verification at [igi.org](http://igi.org)



April 8, 2026  
IGI Report Number **768684309**  
Description **NATURAL DIAMOND**  
Shape and Cutting Style **ROUND BRILLIANT**  
Measurements **6.45 - 6.52 X 3.95 MM**

**GRADING RESULTS**

Carat Weight **1.01 CARAT**  
Color Grade **G**  
Clarity Grade **VVS 2**  
Cut Grade **EXCELLENT**



**ADDITIONAL GRADING INFORMATION**

Polish **EXCELLENT**  
Symmetry **EXCELLENT**  
Fluorescence **SLIGHT**  
Inscription(s) **IGI 768684309**



April 8, 2026  
IGI Report No 768684309  
**ROUND BRILLIANT**  
6.45 - 6.52 X 3.95 MM  
1.01 CARAT  
G  
VVS 2  
EXCELLENT  
60.1%  
60%  
Thin To Slightly Thick (Faceted)  
Pointed  
EXCELLENT  
EXCELLENT  
SLIGHT  
IGI 768684309

**DIAMOND REPORT**

April 8, 2026  
IGI Report Number **768684309**  
Description **NATURAL DIAMOND**  
Shape and Cutting Style **ROUND BRILLIANT**  
Measurements **6.45 - 6.52 X 3.95 MM**

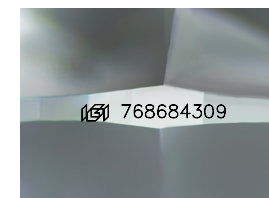
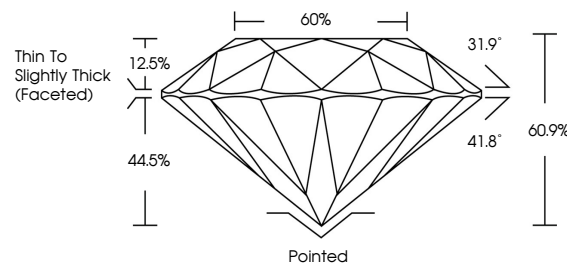
**GRADING RESULTS**

Carat Weight **1.01 CARAT**  
Color Grade **G**  
Clarity Grade **VVS 2**  
Cut Grade **EXCELLENT**

**ADDITIONAL GRADING INFORMATION**

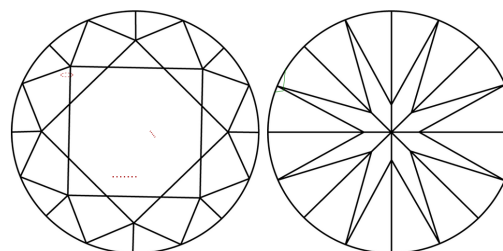
Polish **EXCELLENT**  
Symmetry **EXCELLENT**  
Fluorescence **SLIGHT**  
Inscription(s) **IGI 768684309**

**PROPORTIONS**



Sample Image Used

**CLARITY CHARACTERISTICS**



**KEY TO SYMBOLS**

Red symbols indicate internal characteristics.  
Green symbols indicate external characteristics.

**COLOR**

| D - F     | G - J          | K - M           | N - R            | S - Z       | FANCY |
|-----------|----------------|-----------------|------------------|-------------|-------|
| Colorless | Near Colorless | Slightly Tinted | Very Light Color | Light Color |       |

**CLARITY**

| FL       | IF                  | VVS 1-2                     | VS 1-2                 | SI 1-2            | I 1-3    |
|----------|---------------------|-----------------------------|------------------------|-------------------|----------|
| Flawless | Internally Flawless | Very Very Slightly Included | Very Slightly Included | Slightly Included | Included |

