



**ELECTRONIC COPY**

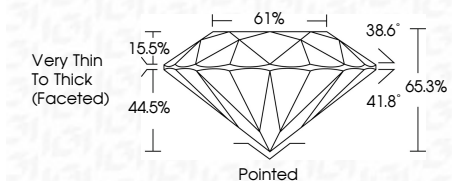
768684299  
Report verification at [igi.org](http://igi.org)



April 2, 2026  
IGI Report Number **768684299**  
Description **NATURAL DIAMOND**  
Shape and Cutting Style **ROUND BRILLIANT**  
Measurements **6.16 - 6.24 X 4.05 MM**

**GRADING RESULTS**

Carat Weight **1.00 CARAT**  
Color Grade **G**  
Clarity Grade **VS 1**  
Cut Grade **VERY GOOD**



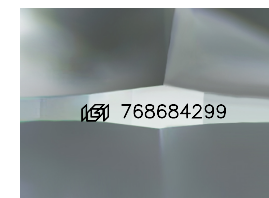
**ADDITIONAL GRADING INFORMATION**

Polish **VERY GOOD**  
Symmetry **GOOD**  
Fluorescence **NONE**  
Inscription(s) **IGI 768684299**



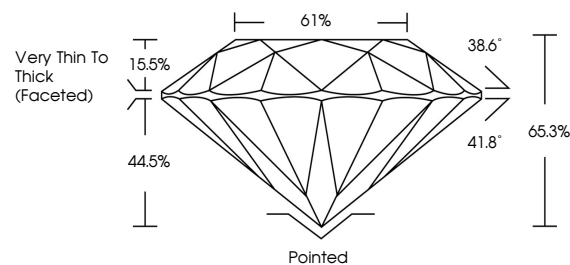
**IGI**

April 2, 2026  
IGI Report No 768684299  
**ROUND BRILLIANT**  
6.16 - 6.24 X 4.05 MM  
1.00 CARAT  
G  
VERY GOOD  
VS 1  
65.3%  
61%  
Very Thin To Thick (Faceted)  
Pointed  
VERY GOOD  
GOOD  
NONE  
IGI 768684299

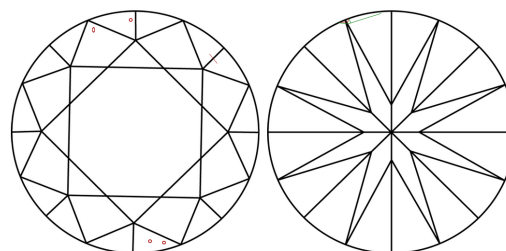


Sample Image Used

**PROPORTIONS**



**CLARITY CHARACTERISTICS**



**KEY TO SYMBOLS**

Red symbols indicate internal characteristics.  
Green symbols indicate external characteristics.

**COLOR**

D - F	G - J	K - M	N - R	S - Z	FANCY
Colorless	Near Colorless	Slightly Tinted	Very Light Color	Light Color	

**CLARITY**

FL	IF	VVS 1-2	VS 1-2	SI 1-2	I 1-3
Flawless	Internally Flawless	Very Very Slightly Included	Very Slightly Included	Slightly Included	Included

