



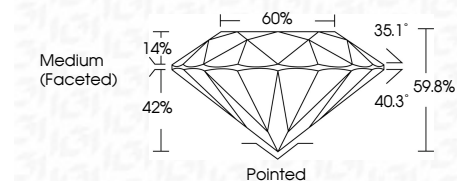
**ELECTRONIC COPY**

768663571  
Report verification at [igi.org](http://igi.org)



May 4, 2026  
IGI Report Number **768663571**  
Description **NATURAL DIAMOND**  
Shape and Cutting Style **ROUND BRILLIANT**  
Measurements **6.44 - 6.48 X 3.86 MM**

**GRADING RESULTS**  
Carat Weight **1.00 CARAT**  
Color Grade **L**  
Clarity Grade **VS 2**  
Cut Grade **EXCELLENT**



**ADDITIONAL GRADING INFORMATION**  
Polish **EXCELLENT**  
Symmetry **EXCELLENT**  
Fluorescence **NONE**  
Inscription(s) **IGI 768663571**  
Comments: IDEAL CUT ROUND BRILLIANT



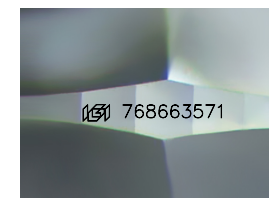
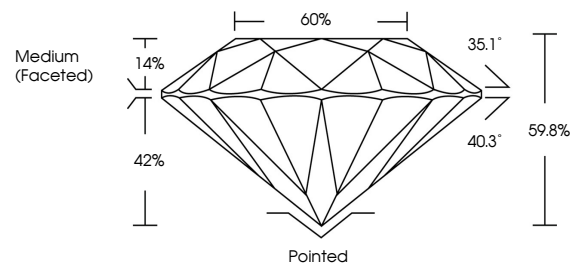
May 4, 2026  
IGI Report No 768663571  
**ROUND BRILLIANT**  
6.44 - 6.48 X 3.86 MM  
1.00 CARAT L  
Color Grade EXCELLENT  
Clarity Grade VS 2  
Depth 61.05%  
Table 60%  
Girdle Medium (Faceted)  
Culet Pointed  
Polish EXCELLENT  
Symmetry EXCELLENT  
Fluorescence NONE  
Inscription(s) IGI 768663571  
Comments: IDEAL CUT ROUND BRILLIANT

May 4, 2026  
IGI Report Number **768663571**  
Description **NATURAL DIAMOND**  
Shape and Cutting Style **ROUND BRILLIANT**  
Measurements **6.44 - 6.48 X 3.86 MM**

**GRADING RESULTS**  
Carat Weight **1.00 CARAT**  
Color Grade **L**  
Clarity Grade **VS 2**  
Cut Grade **EXCELLENT**

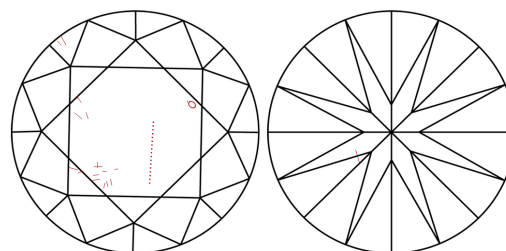
**ADDITIONAL GRADING INFORMATION**  
Polish **EXCELLENT**  
Symmetry **EXCELLENT**  
Fluorescence **NONE**  
Inscription(s) **IGI 768663571**  
Comments: IDEAL CUT ROUND BRILLIANT

**PROPORTIONS**



Sample Image Used

**CLARITY CHARACTERISTICS**



**KEY TO SYMBOLS**

Red symbols indicate internal characteristics.  
Green symbols indicate external characteristics.

**COLOR**

D - F	G - J	K - M	N - R	S - Z	FANCY
Colorless	Near Colorless	Slightly Tinted	Very Light Color	Light Color	

**CLARITY**

FL	IF	VVS <sup>1-2</sup>	VS <sup>1-2</sup>	SI <sup>1-2</sup>	I <sup>1-3</sup>
Flawless	Internally Flawless	Very Very Slightly Included	Very Slightly Included	Slightly Included	Included

